



SEGUIN, TX

WAYFINDING SIGNAGE

04.09.2019

19SEGUIN4

CLIENT
CITY OF SEGUIN

ADDRESS
SEGUIN, TX

DATE 04.09.2019
DESIGNER - RH
DRAWING NO.
19SEGUIN4

REVISION	DATE

APPROVAL DATE -

APPROVED BY -

This sign is intended to be installed in accordance with the requirements of Article 600 of the National Electrical Code and/or other applicable local codes. This includes proper grounding and bonding of the sign. Dimensions are approximate & may change due to construction factors or exact field conditions. Color shown areas close as printing will allow; Always follow written specifications. All rights reserved: This design has been created for you in connection with a project being planned for you by SSC Signs & Lighting. It may not be reproduced in any manner without prior consent.

1. FABRICATED FACE .080 5052 H38 ALODINE PRETREATED ALUMINUM. GRAPHICS FIRST SURFACE VINYL TO BE DIGITALLY PRINTED.

2. DIGITAL PRINT TO MATCH LOGO. VINYL TO BE 3M IJ 680 SCOTCHLITE REFLECTIVE VINYL FILM WITH 3M 1170C CLEAR OVERLAMINATE FILM

3. DIGITAL PRINT TO MATCH PMS 561C AQUA DEEP AND CORIANDER (C12 M5 Y44 K15). VINYL TO BE 3M IJ680 SCOTCHLITE REFLECTIVE VINYL FILM WITH 3M 1170C CLEAR OVERLAMINATE FILM

FONT: HIGHWAY GOTHIC COND.

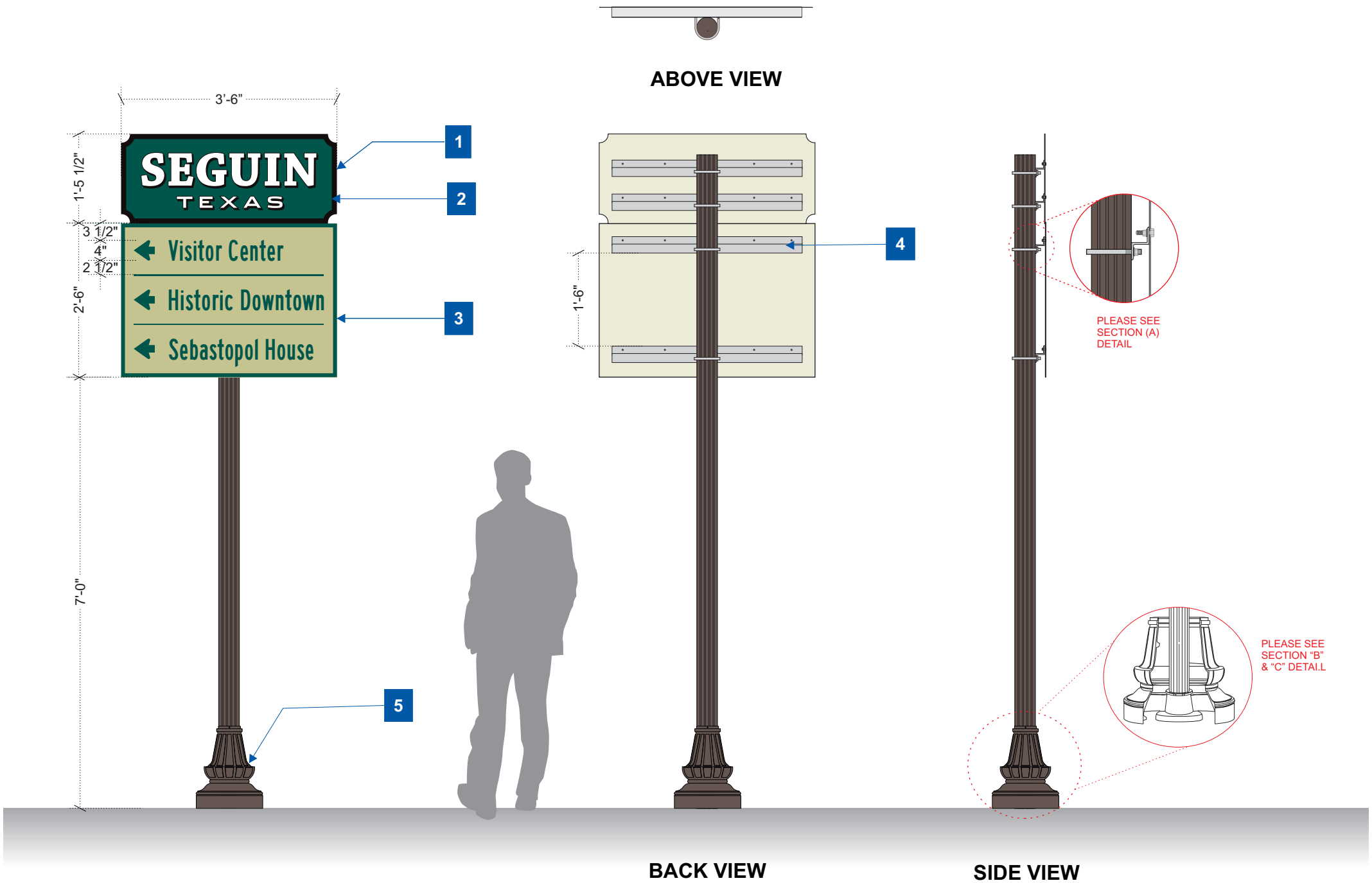
4. SIGNS TO BE MOUNTED TO 4" FLUTED POSTS WITH ALUMINUM Z BAR AND STAINLESS STEEL HEX BOLTS. FLUTED POST PAINTED TBD.

PLEASE SEE SECTION "A" DETAIL

5. SIGN INSTALL USING A TRIANGULAR SLIP BASE WITH CONCRETE ANCHORS. FABRICATED ALUMINUM ORNAMENTAL BASE COVER PAINTED TBD.

POSTS WILL BE INSTALLED WITH TWO PART SLIPBASE ABOVE GRADE.

PLEASE SEE SECTION "B" & "C" DETAIL



BACK VIEW

SIDE VIEW

- V1 - DIGITALLY PRINT TO MATCH PMS 561C AQUA DEEP
- V2 - DIGITALLY PRINT TO MATCH CORIANDER (C12 M5 Y44 K15)
- P1 - PAINT TO BE DETERMINED

CLIENT
CITY OF SEGUIN

ADDRESS
SEGUIN, TX

DATE 04.09.2019
DESIGNER - RH
DRAWING NO.
19SEGUIN4

REVISION	DATE

APPROVAL DATE -

APPROVED BY -

This sign is intended to be installed in accordance with the requirements of Article 600 of the National Electrical Code and/or other applicable local codes. This includes proper grounding and bonding of the sign. Dimensions are approximate & may change due to construction factors or exact field conditions. Color shown areas close as printing will allow; Always follow written specifications. All rights reserved: This design has been created for you in connection with a project being planned for you by SSC Signs & Lighting. It may not be reproduced in any manner without prior consent.

1. FABRICATED FACE .080 5052 H38 ALODINE PRETREATED ALUMINUM. GRAPHICS FIRST SURFACE VINYL TO BE DIGITALLY PRINTED.

2. DIGITAL PRINT TO MATCH LOGO. VINYL TO BE 3M IJ 680 SCOTCHLITE REFLECTIVE VINYL FILM WITH 3M 1170C CLEAR OVERLAMINATE FILM

3. DIGITAL PRINT TO MATCH PMS 561C AQUA DEEP AND CORIANDER (C12 M5 Y44 K15). VINYL TO BE 3M IJ680 SCOTCHLITE REFLECTIVE VINYL FILM WITH 3M 1170C CLEAR OVERLAMINATE FILM

FONT: HIGHWAY GOTHIC COND.

4. SIGNS TO BE MOUNTED TO 4" BREAKAWAY POSTS WITH ALUMINUM Z BAR AND STAINLESS STEEL HEX BOLTS. FLUTED POST PAINTED TBD.

PLEASE SEE SECTION "A" DETAIL

5. POSTS WILL BE INSTALLED WITH TWO PART SLIPBASE ABOVE GRADE.

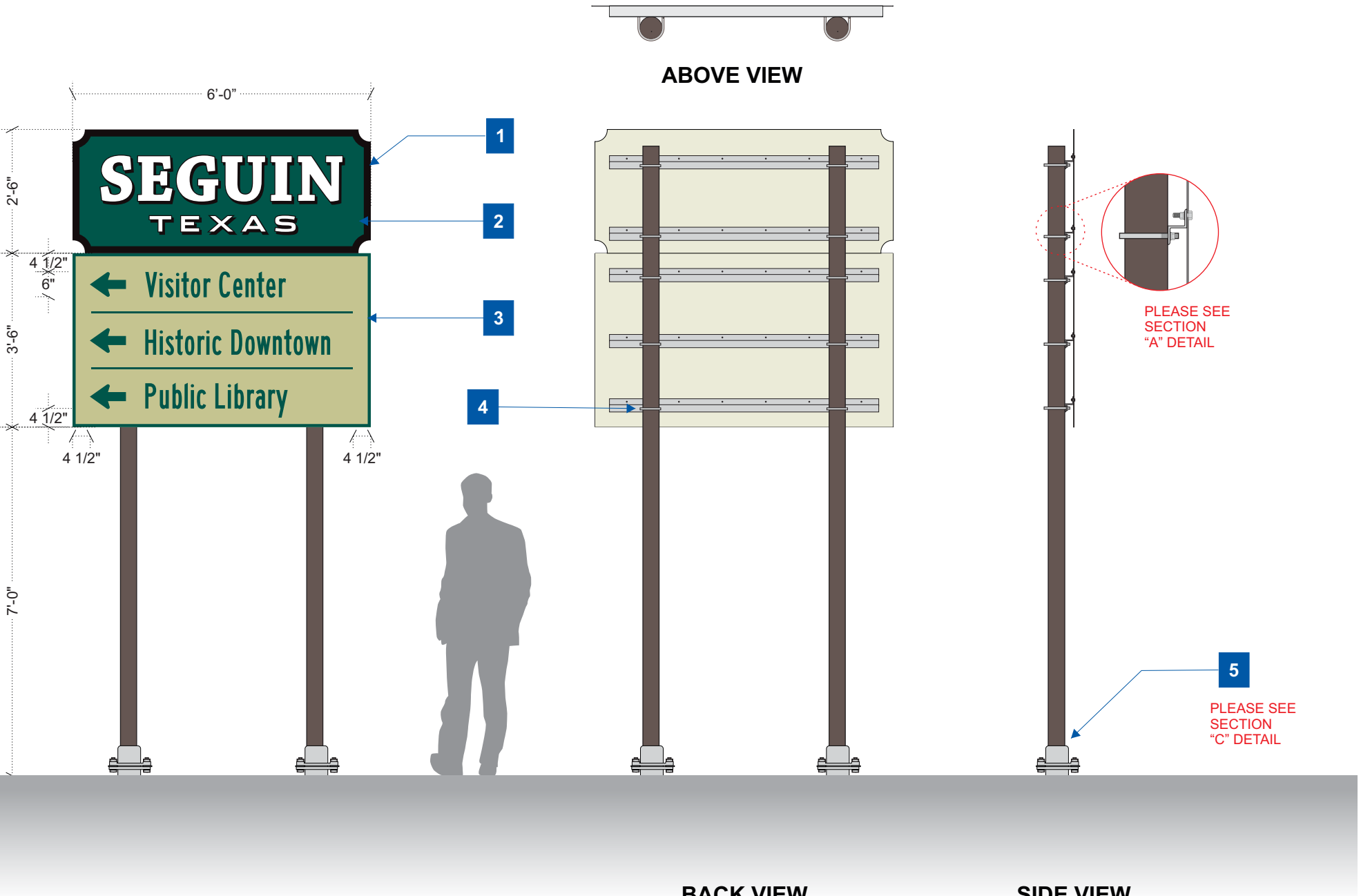
PLEASE SEE SECTION "C" DETAIL

- V1 - DIGITALLY PRINT TO MATCH PMS 561C AQUA DEEP
- V2 - DIGITALLY PRINT TO MATCH CORIANDER (C12 M5 Y44 K15)
- P1 - PAINT TO BE DETERMINED

ABOVE VIEW

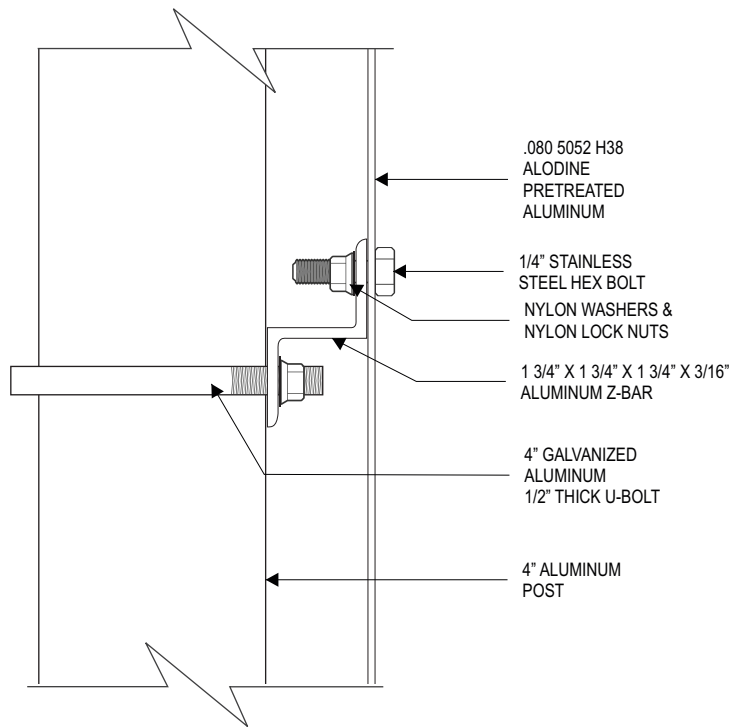
SIDE VIEW

BACK VIEW

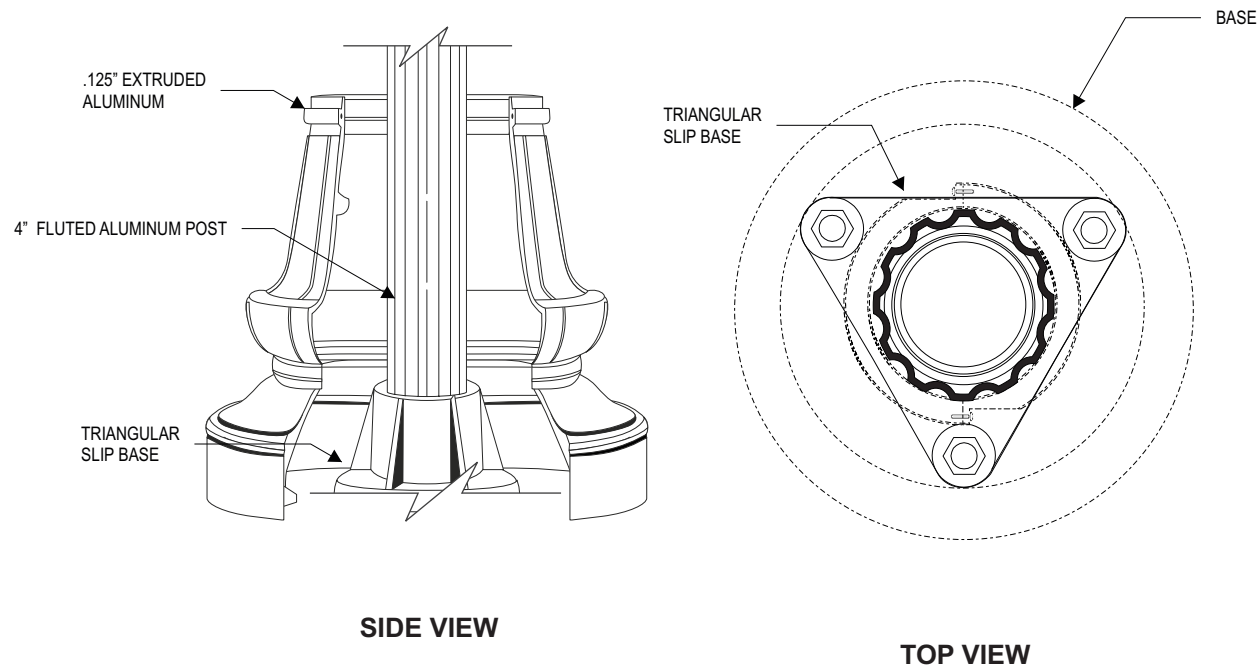


002 VEHICULAR SIGN
SCALE: 3/8" = 1'

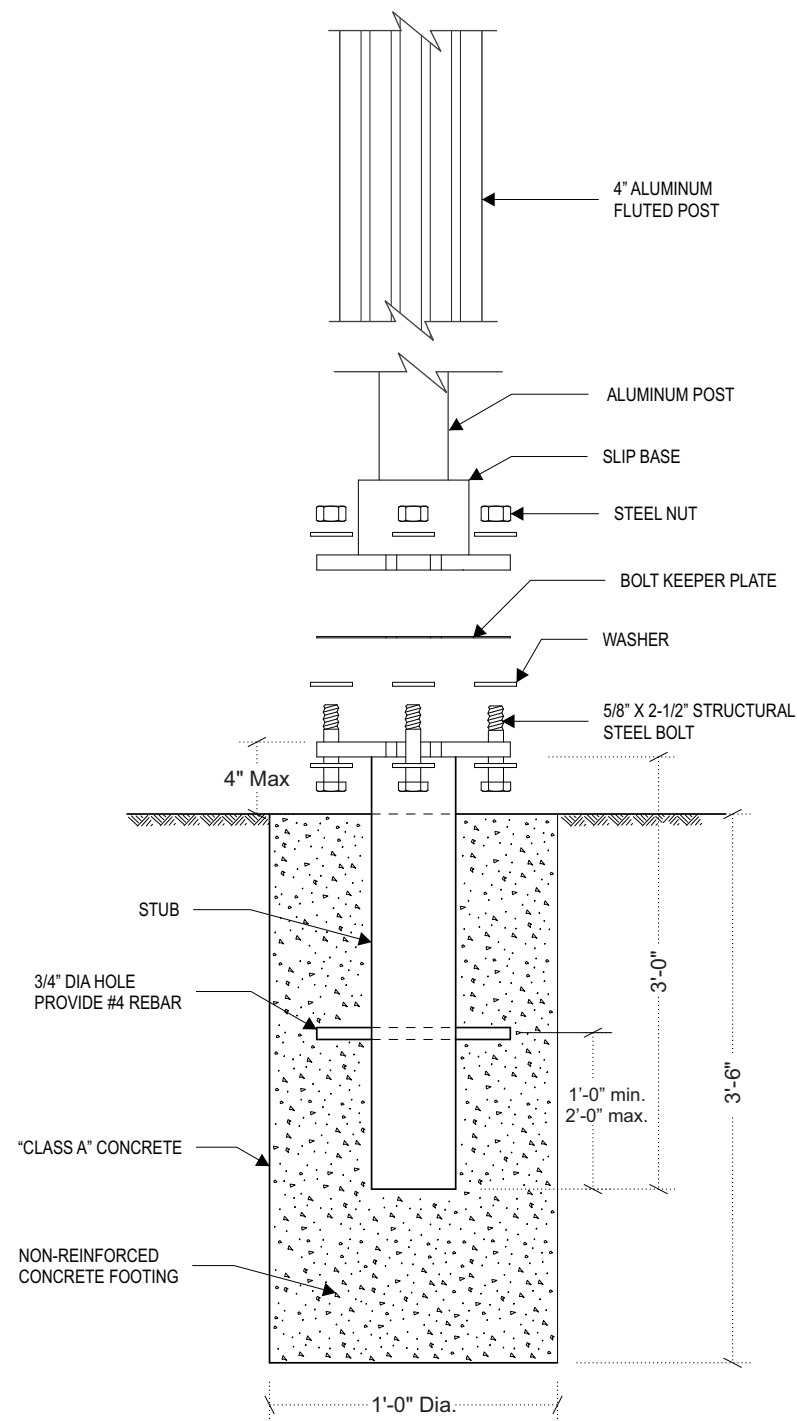
7'-0" CLEARANCE ABOVE
SURFACE OF ADJACENT ROADWAY.



A **DETAIL - POLE ATTACHMENT**
SCALE: NTS



B **DETAIL - DECORATIVE BASE**
SCALE: NTS



C **DETAIL - CONCRETE FOOTING**
SCALE: NTS

CLIENT
CITY OF SEGUIN

ADDRESS
SEGUIN, TX

DATE 04.09.2019
DESIGNER - RH
DRAWING NO.
19SEGUIN4

REVISION	DATE

APPROVAL DATE -

APPROVED BY -

This sign is intended to be installed in accordance with the requirements of Article 600 of the National Electrical Code and/or other applicable local codes. This includes proper grounding and bonding of the sign. Dimensions are approximate & may change due to construction factors or exact field conditions. Color shown areas close as printing will allow; Always follow written specifications. All rights reserved: This design has been created for you in connection with a project being planned for you by SSC Signs & Lighting. It may not be reproduced in any manner without prior consent.