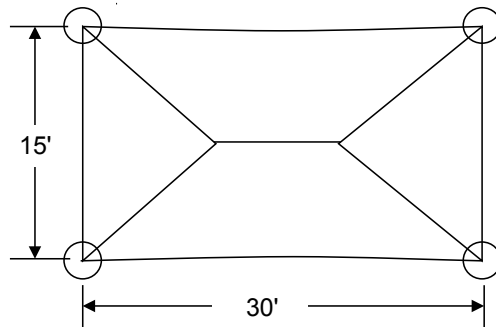
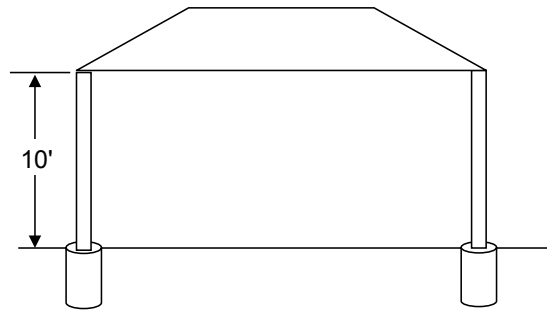


15' x 30' Four Post



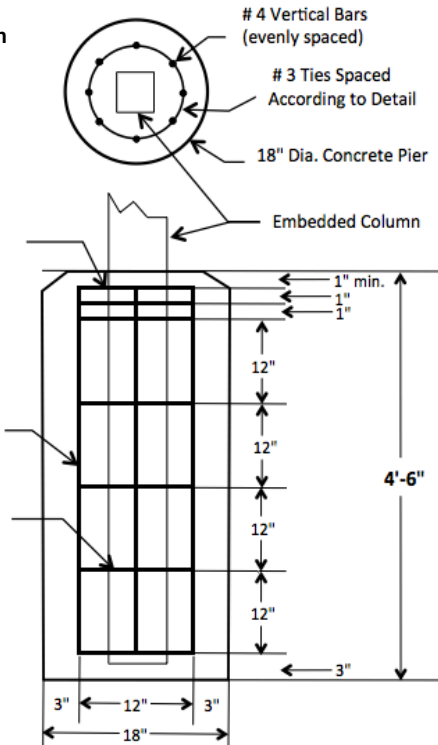
All Measurements provided are
Center to Center of Column.

**18" x 4'-6"
Embedded
Columns with
2500psi Min.
Concrete**

3 Ties Spaced
According to Detail

4 Vertical Bars
(evenly spaced)

3 Ties Spaced
According to Detail



All phases of the work shall conform to standard methods of steel fabrication and construction as set forth by the 2015 International Building Code and the AISC Manual of Steel Construction. Concrete / Foundation work shall be in accordance with the ACI 318-14.

Structural steel shall be cold-formed structural quality steel, welded or seamless, complying with ASTM A-500, Grade B.

Embedded Columns 18" x 4'-6" reinforced with rebar per detail.

All field connections shall be bolted in accordance with ASTM Structural Specification for Bolted Connections. No welding shall be done in the field.

100% High-density polyethylene woven architectural fabric membrane canopy Commercial 95 by Gale Pacific. Tested to ASTM E-8400 meeting Class A requirements and NFPA 701-99 method 2. Sewn with Gore/Tenara thread.

Perimeter Cable 1/4" Dia. Galvanized 7x19 Stranded Min. Tensile Strength of 7,000lbs

Powder coated finish complying with requirements of UL 1332, Organic Coating for Steel Enclosures for Outdoor Use Electrical Equipment - Component.



ShadePro LLC
1067 FM 306 #202
New Braunfels TX 78130
Ph 830-625-2154
Email: Information@ShadePro.com