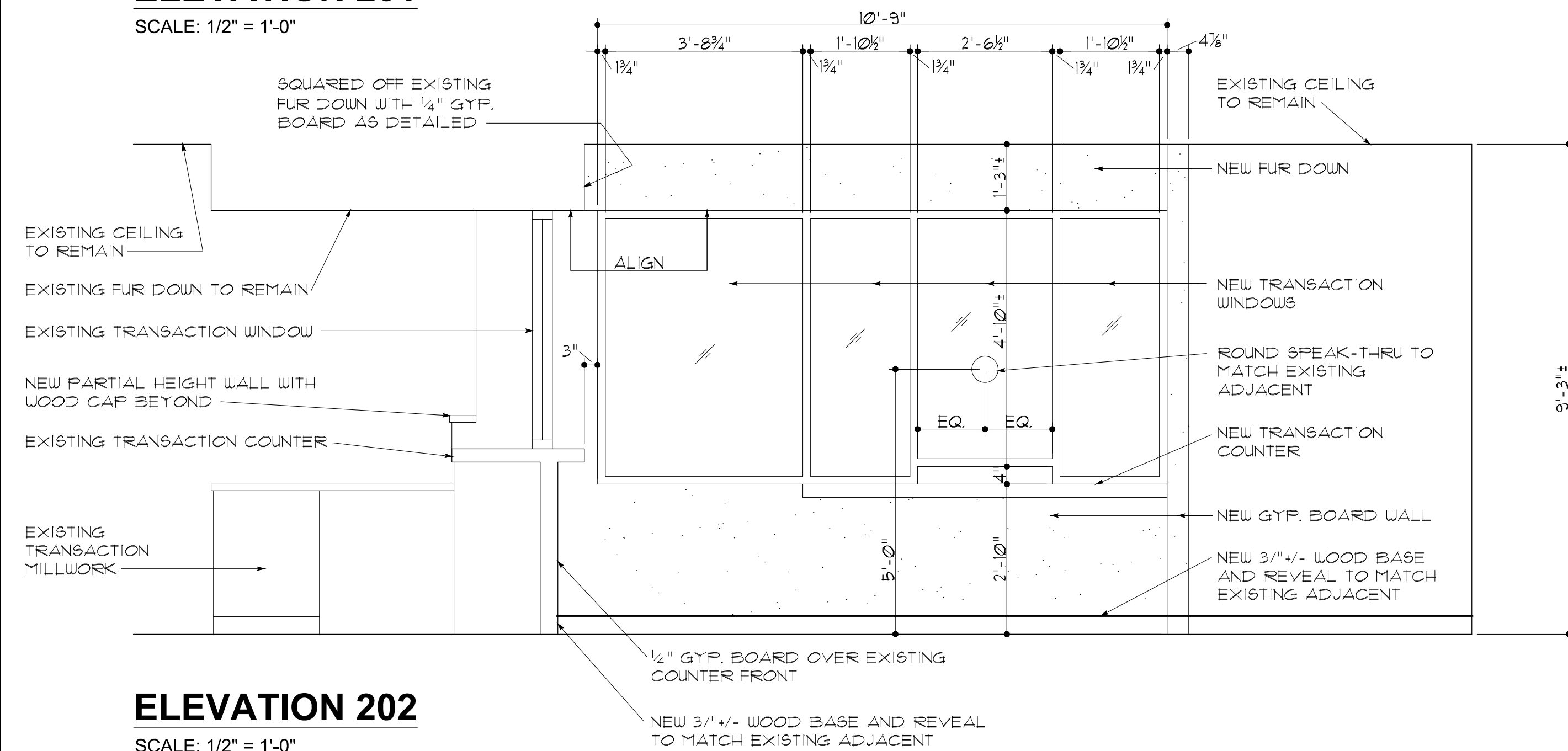


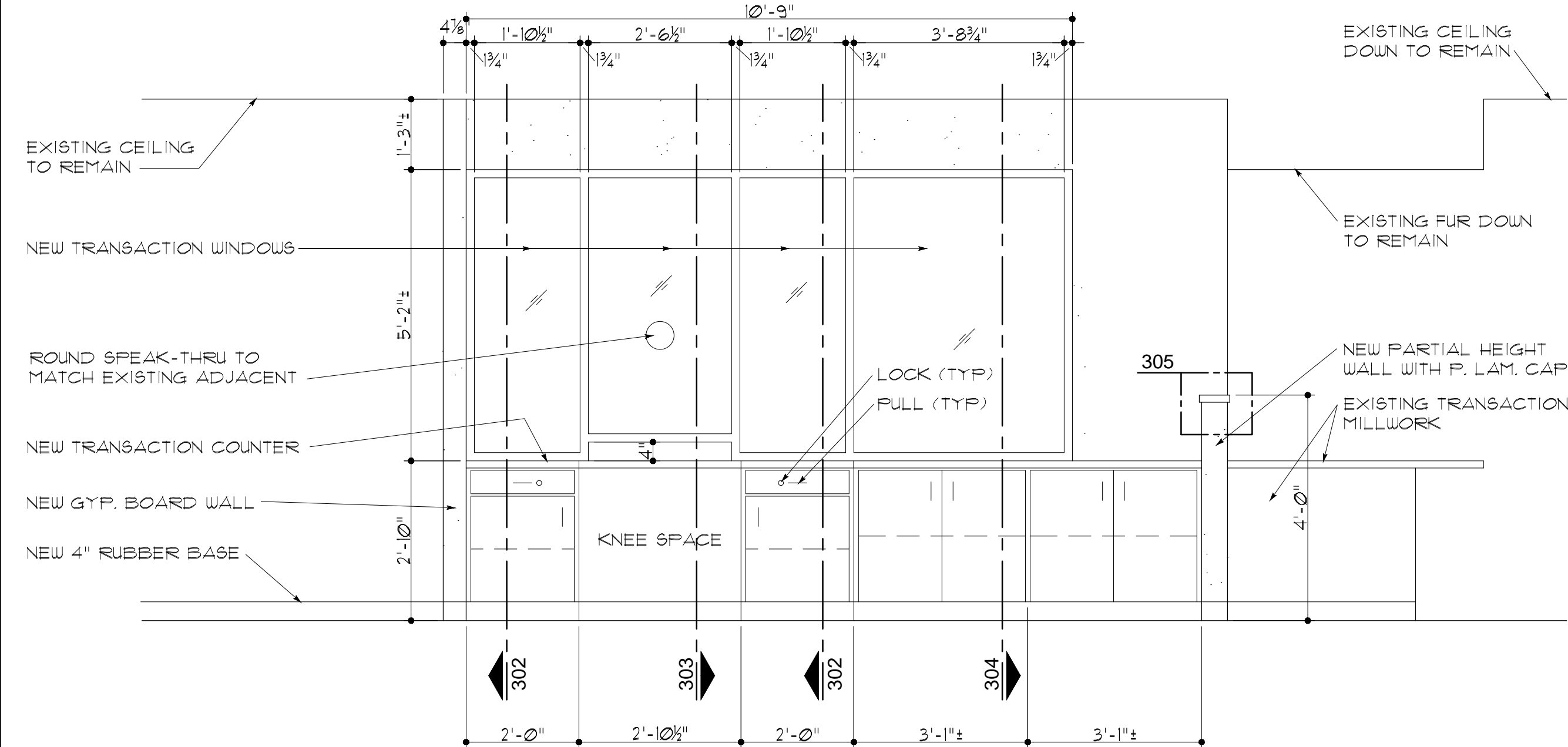
**ELEVATION 201**

SCALE: 1/2" = 1'-0"



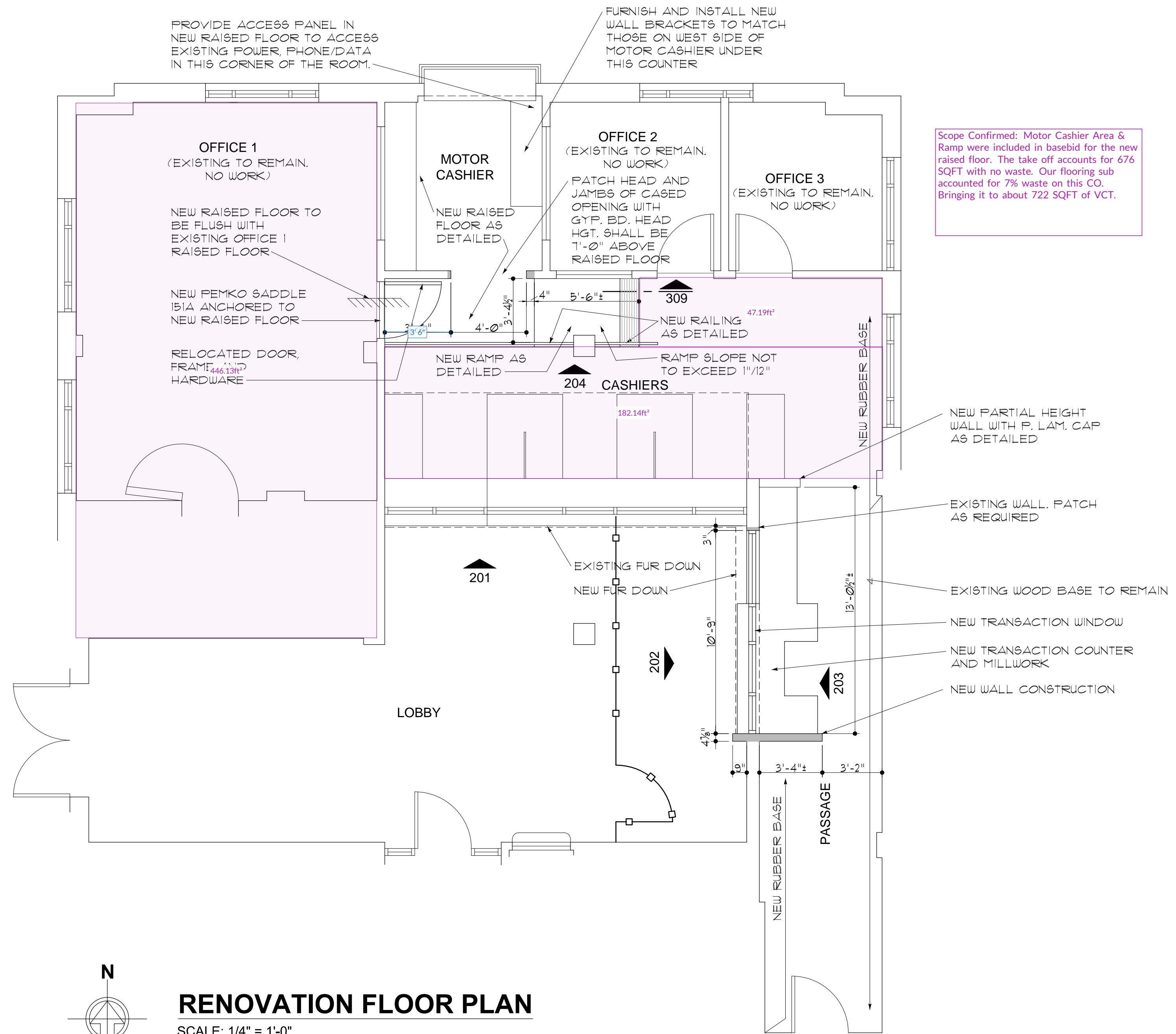
**ELEVATION 202**

SCALE: 1/2" = 1'-0"



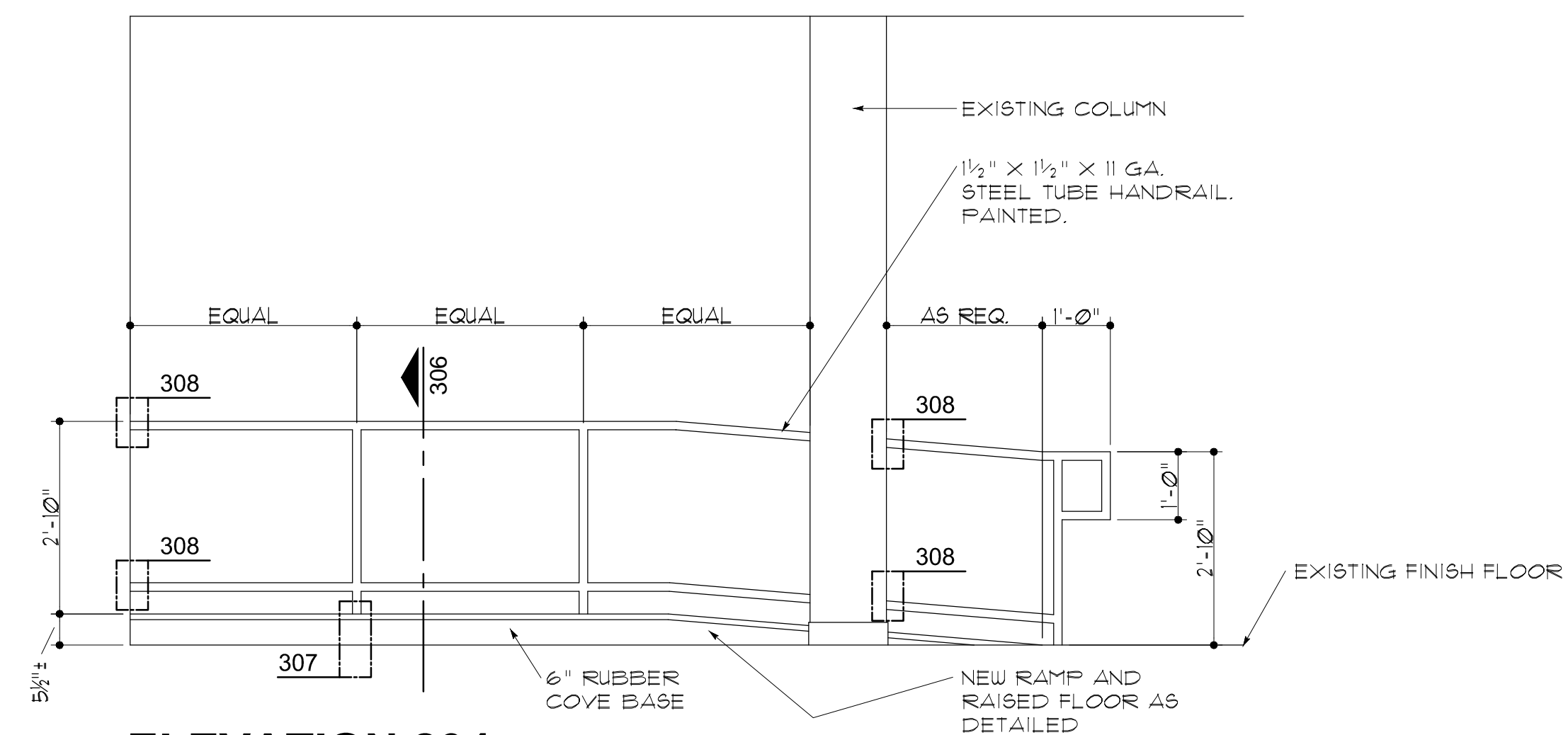
**ELEVATION 203**

SCALE: 1/2" = 1'-0"



**RENOVATION FLOOR PLAN**

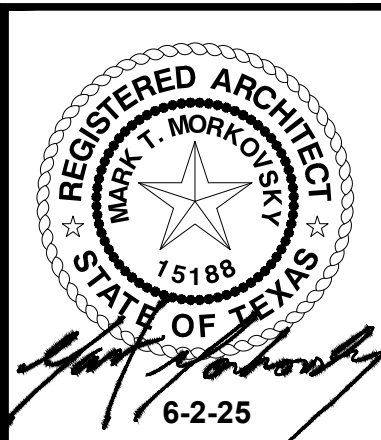
SCALE: 1/4" = 1'-0"



**ELEVATION 204**

SCALE: 1/2" = 1'-0"

Scope Confirmed: Motor Cashier Area & Ramp were included in basebid for the new raised floor. The take off accounts for 676 SQFT with no waste. Our flooring sub accounted for 7% waste on this CO. Bringing it to about 722 SQFT of VCT.



**ALTERATIONS TO THE CITY OF SEGUIN MUNICIPAL BUILDING**  
205 NORTH RIVER STREET  
SEGUIN, TEXAS

**MORKOVSKY + ASSOCIATES, INC.**  
ARCHITECT - PLANNER - CONSULTANT  
SAN ANTONIO, TEXAS  
WWW.MORKOVSKYAJA.COM  
(P) 210 - 341 - 5565



DATE 6-2-25	DRAWN BY CAM
PROJECT NUMBER <b>CT 25-001</b>	
SHEET NUMBER <b>A-2</b> 2 OF 3	
REVISED	

THIS DRAWING IS PROVIDED AS AN INSTRUMENT OF SERVICE BY THE ARCHITECT AND IS INTENDED FOR USE ONLY FOR THE PROJECT AND SITE SPECIFICALLY IDENTIFIED HEREIN. THE ARCHITECT AND SHALL BE HELD RESPONSIBLE TO THE COMPLETION OF THE CONSTRUCTION WORK. ANY REPRODUCTION OR ALTERATION OF THIS DRAWING WITHOUT THE WRITTEN APPROVAL OF THE ARCHITECT IS PROHIBITED.