



1221 E. Kingsbury Street
Seguin, TX 78155
Phone 830-401-1252
Fax 830-401-4062
calexander@seguin.k12.tx.us

Carlos Alexander, Director of Facilities and Construction

June 4, 2015

Ms. Naomi Manski
Assistant to the City Manager
City of Seguin
205 N. River Rd.
Seguin, TX 78155

Dear Ms. Naomi Manski,

As you may know Seguin ISD is building a new Seguin High School at the existing HS location. Construction is about to begin and the District is making preparations and temporary facilities to accommodate the displacement of students and staff for the summer 2015 thru fall 2017 Construction Period.

The General Contractor, Bartlett Cocke-Koehler is taking possession of a major portion of the North side of the campus and this includes our HS student parking Lot on Cedar St. and the HS staff parking lot on Lamar St.. (See the attached BC-K Phasing Plans). The District is preparing our Oak Park Mall facility for use as temporary parking as shown on the attached aerial/site plan.

In order to ensure a safe environment for our students and staff the District is requesting that Cedar St. be temporarily closed from Cardinal St. on the East side to Lamar St. on the West side from Monday to Friday every week for the duration of the construction period from August 2015 thru August 2017. TxDot has reviewed the proposed plan and all their concerns have been addressed.

The District would appreciate your approval of this request. If you have any questions, please feel free to contact me.

Sincerely,

A handwritten signature in blue ink that reads "Carlos Alexander".

Carlos Alexander
Director of Facilities and Construction

Cc: Dr. Guadalupe C. Gorordo, Interim Superintendent



OAK PARK MALL - PROPOSED PARKING

Proposed Contractor Parking

Fenced pathway w/screen

Drive to remain

Proposed Contractor Parking

Barrier/Flashers

Contractor Crossing

Closed Street

Student Crossing

MBLC Parking

87 Spaces

STUDENTS

271 Spaces

STAFF

70 Spaces

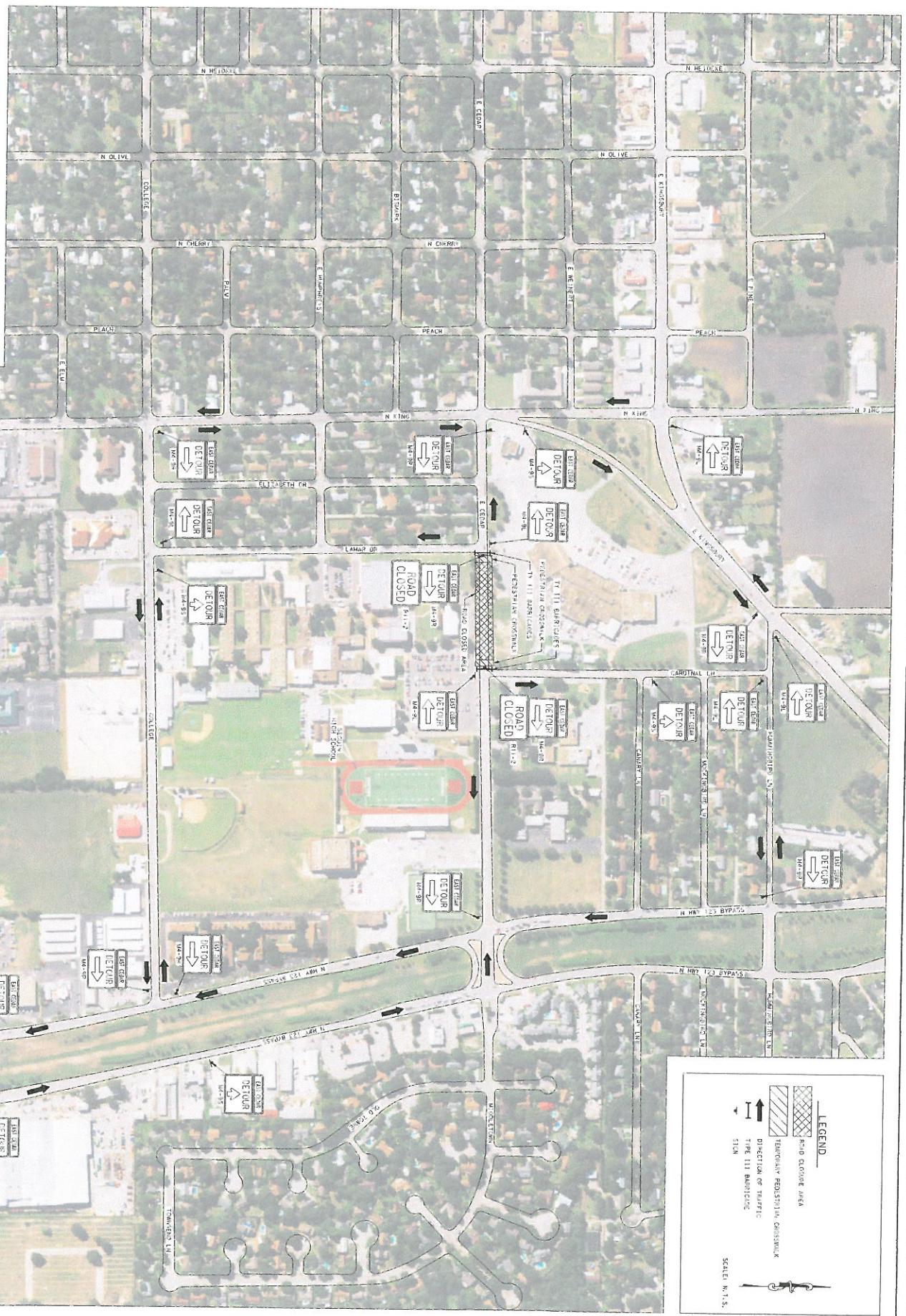
ADMINISTRATION

SISD

86 Spaces

ARLAN'S PARKING

- NOTES:
1. IT IS THE CONTRACTOR'S RESPONSIBILITY TO OBTAIN AND MAINTAIN TEMPORARY STOPS
 2. TEMPORARY TRAFFIC CONTROL DEVICES SHALL BE PLACED TO PROTECT THE DRIVEWAY PUBLIC
 3. THE CONTRACTOR SHALL PROVIDE THE CITY AN DAILY TRAFFIC CONTROL PLAN FOR REVIEW
 4. ALL ACTIVITIES SHALL BE IN ACCORD WITH THE DISCRETION OF THE ENGINEER
 5. TEMPORARY TRAFFIC CONTROL DEVICES SHALL BE MAINTAINED AT ALL TIMES
 6. THE CONTRACTOR SHALL BE RESPONSIBLE FOR PROVIDING SUITABLE ACCESS TO ALL
 7. TRAFFIC SHALL BE KEPT CLEAR OF THE WORK AREA



LEGEND

- ROAD CLOSURE AREA
- DIRECTION OF TRAFFIC
- TYPE III BARRIERS
- SCALE: 1/4" = 1'

TCR 100.RV

SEGUIN HIGH SCHOOL

115 LAUREL DR
SEGUIN, TX 78155
SEGUIN INDEPENDENT SCHOOL DISTRICT

PROJECT INFORMATION

PROJECT NAME: SEGUIN HIGH SCHOOL

PROJECT LOCATION: 115 LAUREL DR, SEGUIN, TX 78155

PROJECT OWNER: SEGUIN INDEPENDENT SCHOOL DISTRICT

CLIENT

SEGUIN INDEPENDENT SCHOOL DISTRICT

DESIGNER

erio architects

2014 S. 9th Street
Midland, TX 79701
P: 409-491-4411
F: 409-491-4412
www.erioarchitects.com

DATE

10/1/15

CONSTRUCTION DOCUMENTS

1001'S

CONTRACTOR

CONSTRUCTION COMPANY, INC.

CONSULTANTS

CONTRACTOR: JENSON HANCOCK & ASSOCIATES, INC.

ARCHITECT: erio architects

ENGINEER: TERRY NORTON ENGINEERING GROUP

LANDSCAPE ARCHITECT: TERRY NORTON ENGINEERING GROUP

PLANNING: TERRY NORTON ENGINEERING GROUP

TRAFFIC ENGINEER: TERRY NORTON ENGINEERING GROUP

UTILITY ENGINEER: TERRY NORTON ENGINEERING GROUP

SOILS ENGINEER: TERRY NORTON ENGINEERING GROUP

WATER ENGINEER: TERRY NORTON ENGINEERING GROUP

ENVIRONMENTAL ENGINEER: TERRY NORTON ENGINEERING GROUP

CONSTRUCTION MANAGEMENT: TERRY NORTON ENGINEERING GROUP

INSURANCE BROKER: TERRY NORTON ENGINEERING GROUP

LEGAL COUNSEL: TERRY NORTON ENGINEERING GROUP

ACCOUNTING: TERRY NORTON ENGINEERING GROUP

MARKETING: TERRY NORTON ENGINEERING GROUP

OPERATIONS: TERRY NORTON ENGINEERING GROUP

SALES: TERRY NORTON ENGINEERING GROUP

TRAINING: TERRY NORTON ENGINEERING GROUP

RESEARCH: TERRY NORTON ENGINEERING GROUP

DEVELOPMENT: TERRY NORTON ENGINEERING GROUP

MANAGEMENT: TERRY NORTON ENGINEERING GROUP

ADMINISTRATION: TERRY NORTON ENGINEERING GROUP

GENERAL SERVICES: TERRY NORTON ENGINEERING GROUP

MAINTENANCE: TERRY NORTON ENGINEERING GROUP

REPAIRS: TERRY NORTON ENGINEERING GROUP

REPLACEMENTS: TERRY NORTON ENGINEERING GROUP

UPDATES: TERRY NORTON ENGINEERING GROUP

MODIFICATIONS: TERRY NORTON ENGINEERING GROUP

ADDITIONS: TERRY NORTON ENGINEERING GROUP

DEMOLITIONS: TERRY NORTON ENGINEERING GROUP

CONVERSIONS: TERRY NORTON ENGINEERING GROUP

RENOVATIONS: TERRY NORTON ENGINEERING GROUP

RESTORATIONS: TERRY NORTON ENGINEERING GROUP

RECONSTRUCTIONS: TERRY NORTON ENGINEERING GROUP

REPAIRS AND MAINTENANCE: TERRY NORTON ENGINEERING GROUP

REPLACEMENTS AND UPDATES: TERRY NORTON ENGINEERING GROUP

MODIFICATIONS AND ADDITIONS: TERRY NORTON ENGINEERING GROUP

DEMOLITIONS AND CONVERSIONS: TERRY NORTON ENGINEERING GROUP

RENOVATIONS AND RESTORATIONS: TERRY NORTON ENGINEERING GROUP

RECONSTRUCTIONS AND REPAIRS: TERRY NORTON ENGINEERING GROUP

REPAIRS AND MAINTENANCE: TERRY NORTON ENGINEERING GROUP

REPLACEMENTS AND UPDATES: TERRY NORTON ENGINEERING GROUP

MODIFICATIONS AND ADDITIONS: TERRY NORTON ENGINEERING GROUP

DEMOLITIONS AND CONVERSIONS: TERRY NORTON ENGINEERING GROUP

RENOVATIONS AND RESTORATIONS: TERRY NORTON ENGINEERING GROUP

RECONSTRUCTIONS AND REPAIRS: TERRY NORTON ENGINEERING GROUP