



August 19, 2025

Terri Lynn Ruckstuhl, P.E.
Utility Engineer
City of Seguin
3027 N. Austin St.
Seguin, Texas 78155

Re: City of Seguin – 36-inch Geronimo Creek Sewer Interceptor Amendment No. 1

Dear Mrs. Ruckstuhl:

Kimley-Horn and Associates, Inc. (“Kimley-Horn” or “Consultant”) and City of Seguin (“Client”) entered into a Professional Services Agreement dated April 16, 2024 (“Agreement”) concerning City of Seguin – 36-Inch Geronimo Creek Sewer Interceptor (“Project”). Per coordination with the City of Seguin, Kimley-Horn has been requested to expand the scope of services to include design of an 8-inch sewer main along Monticello St and upsizing of existing 4-inch and 6-inch water mains along Monticello St, Wakefield, and Wayside Dr, as shown in the attached Exhibit A. This expansion of the scope will require additional general engineering and survey efforts. Below is a summary of work required to complete this additional service request:

Task 4 – 90% Design Phase

Conduct a site visit to evaluate alignments for the proposed 8-inch sewer and 8-inch water mains. Prepare 90% Plan and Profile sheets for approximately 800 LF of 8-inch sewer main. Prepare 90% Plan sheets for approximately 1,600 LF of 8-inch water main. Perform additional topographic survey.

Fee: \$39,000

Task 5 – 100% Design Phase

Prepare 100% Plan and Profile sheets for approximately 800 LF of 8-inch sewer main. Prepare 100% Plan sheets for approximately 1,600 LF of 8-inch water main.

Fee: \$8,900

Task 6 – Construction Phase

Review small diameter sewer main and water main construction submittals and attend an additional two (2) site visits to observe progress of the 8-inch sewer main and 8-inch water main construction.

Fee: \$8,400

Task 7 – Close-out Phase

Prepare Record Drawings for the 8-inch water main and 8-inch sewer main from contractor's redlines.

Fee: \$1,700



The total effort to complete the design of the 8-inch sewer main and 8-inch water main, including the additional survey work, is \$58,000.00. I respectfully request funds in the amount of \$58,000 be added to the contract to fund the expanded scope of services described above.

Thank you for your consideration of this request. If you have any questions, please contact me at (210) 321-3407 or mario.valdez@kimley-horn.com.

Sincerely,

A handwritten signature in blue ink, appearing to read "Mario Valdez".

Mario Valdez, P.E.
Project Manager

AGREED AND ACCEPTED:
City of Seguin

By: _____

Title: _____

Date: _____

Monticello St Water

Exhibit A

0 76 Feet





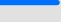
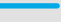
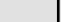


SEGUIN
TEXAS

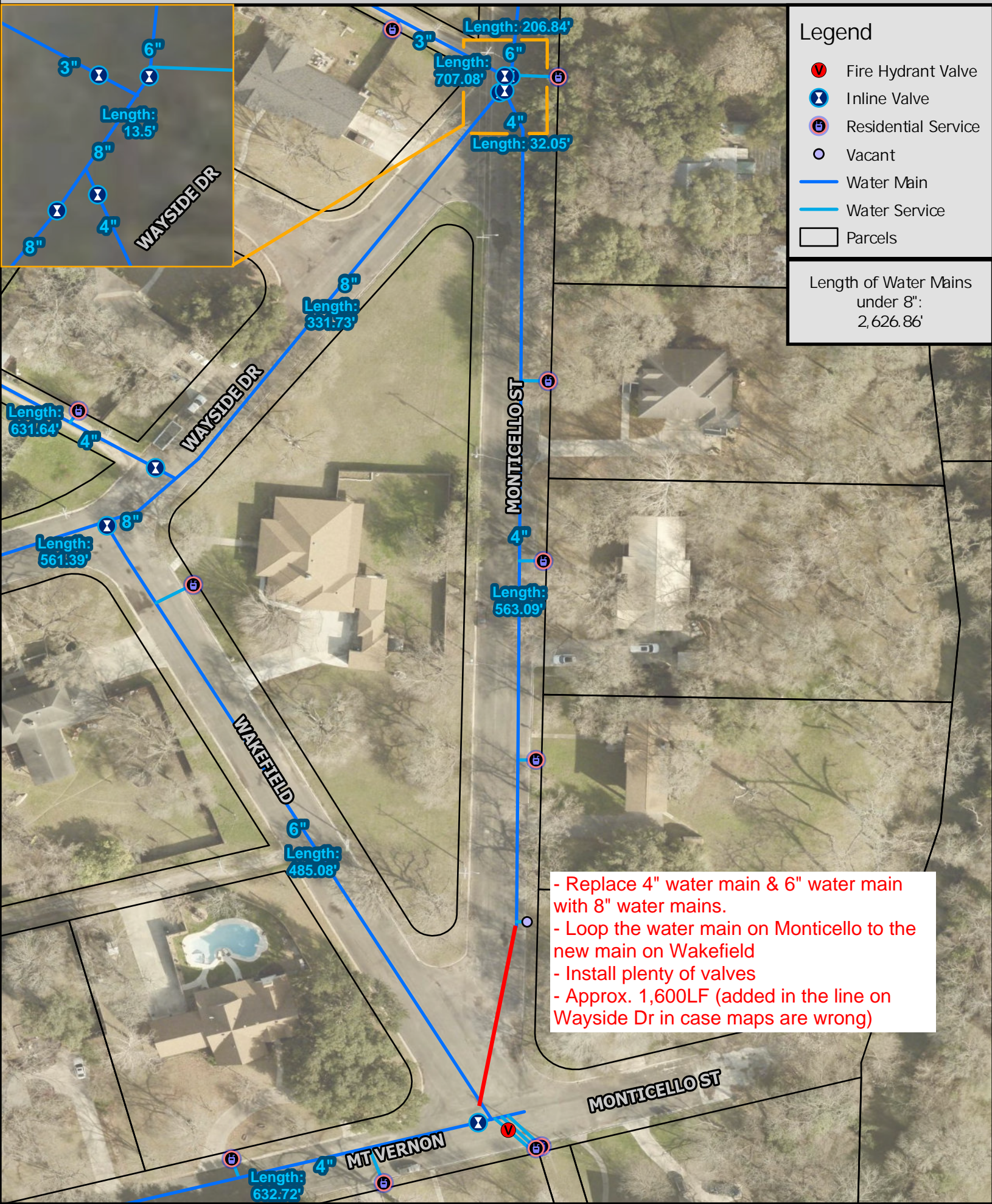
It's real.

This map is for information purposes only and represents the best data available at the time of printing. The City of Seguin assumes no liability for errors on this map or use of this information.

Legend

-  Fire Hydrant Valve
-  Inline Valve
-  Residential Service
-  Vacant
-  Water Main
-  Water Service
-  Parcels

Length of Water Mains
under 8":
2,626.86'



- Replace 4" water main & 6" water main with 8" water mains.
- Loop the water main on Monticello to the new main on Wakefield
- Install plenty of valves
- Approx. 1,600LF (added in the line on Wayside Dr in case maps are wrong)