



# City of Seguin Transportation

**SEGUIN**  
TEXAS

It's real.

## **BENEFITS of PUBLIC TRANSPORTATION**

- Economic Growth
  - Expand the Labor market
    - Job Creations
  - Health Services
    - Promoting Better Access
  - Social/ Community Engagement
    - Local Spending



# SERVICES ART PROVIDES IN SEGUIN

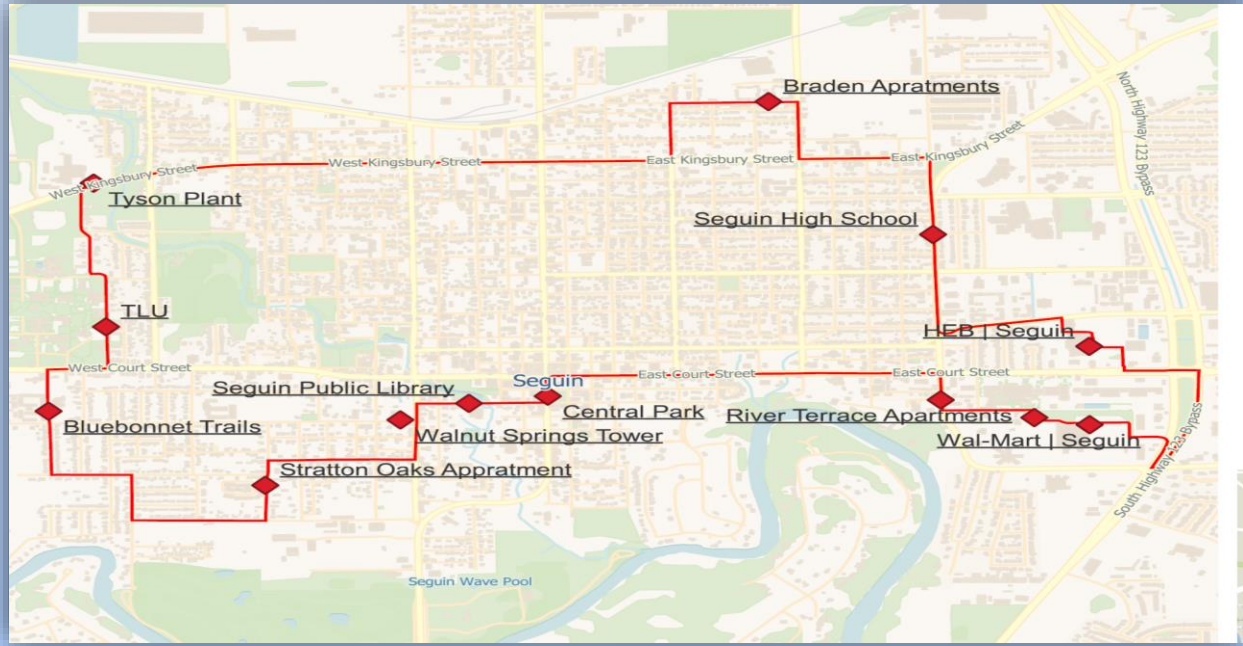
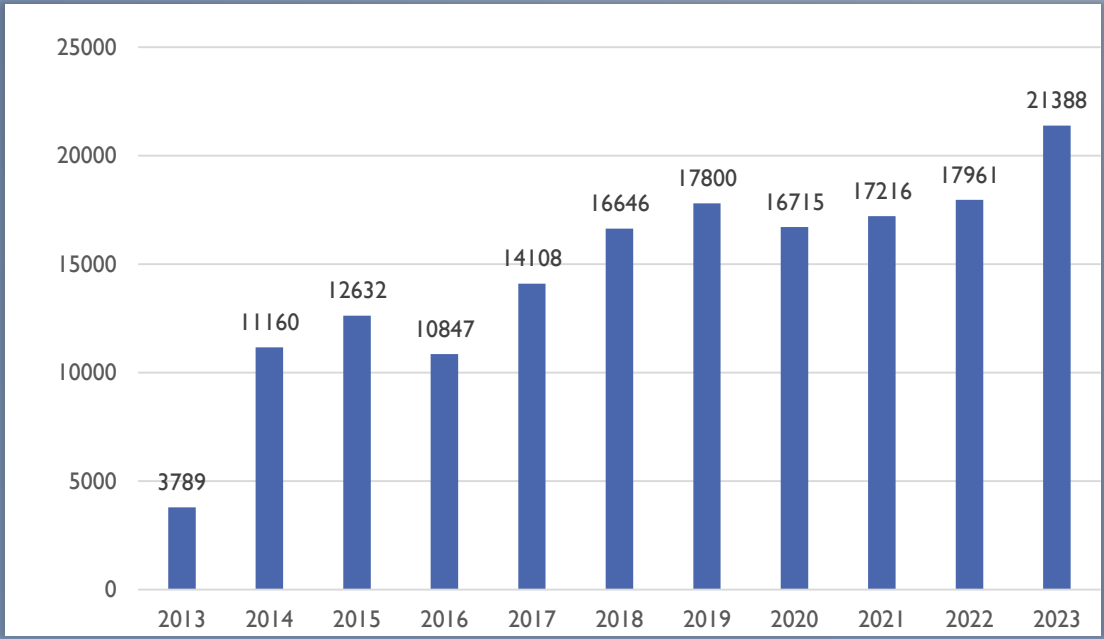
- Scheduled Route Service
- Advance Demand Response (ADR)
- Micro Transit
- Travel Training
- Regional Coordination Transportation Planning



# CONNECT SEGUIN

**DAYS OF OPERATIONS  
MONDAY THRU FRIDAY  
7:00 AM – LAST RUN 5:00 PM**

It's real.



# ADVANCED DEMAND RESPONSE



**DAYS OF OPERATIONS  
MONDAY THRU FRIDAY  
6:00 AM –6:00 PM**



It's real.

- Call the dispatchers at **1-866-889-7433**  
Call in your request as soon as possible
- Be ready for pickup 30 minutes before your scheduled pickup time



# ALAMO REGIONAL TRANSIT MOBILE APP - PRONTO

---

- PRONTO – ART's Micro transit same day trips
- The Mobility App allows passengers to manage their transportation from the convenience of their smart phone
  - Empower riders to manage the scheduling of their trips
  - Through the app you can cancel trips or rebook

# Alamo Regional Transit - Mobile App



Rider Card

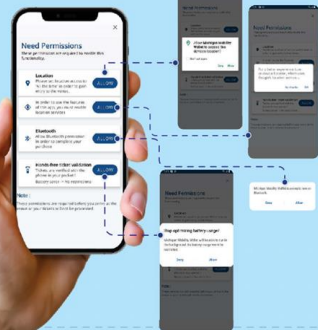
## 1. Install the App

- Find Alamo Regional Transit on the Google Play Store or the App Store
- Download the app and grant the necessary permissions



To provide you with the best experience, our app requires a few permissions.

Please grant the following permissions for full functionality



Alamo Regional Transit

RIDER CARD



Alamo Regional Transit

RIDER CARD

Alamo Regional Transit (ART) serves 12 rural counties – Atascosa, Bandera, Comal, Frio, Gillespie, Guadalupe, Karnes, Kendall, Kerr, Medina, McMullen, and Wilson.



Download the Alamo Regional Transit App today



## 2. Login or Register



Once you're on the dashboard, click on the "Login" button. It will redirect you to the login/registration screen. You have the option to proceed with Google/Apple sign-in.

- If you already have an account, you can simply log in.

- After a successful login, you will be automatically directed to the dashboard.



- Please complete this form to book a trip.



Note: You will now have access to view fare and book any available trips.



## 4. Plan a Trip

- Feel free to establish a new Alamo Regional Transit account if you prefer.



- On the trip planner page, you need to enter your source and destination addresses.
- You also have the option to drag the map to select the source location.
- After entering the source and destination addresses, you will be directed to the suggested route page.



## 5. Suggested routes

- The app displays various route options and recommendations.
- Click your option from the list.
- Please complete this form to book a trip.



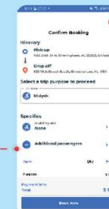
## 3. Email verification

- Now we will send an email to the email address you provided.
- Please check your email and complete the registration by verifying it.
- Once you have verified your account via email, click on the get started button.
- This completes the successful registration to book.



## 6. Book a Ride

- You can also see the total cost and estimated travel times for your trip.
- To book a trip, simply select your option from the suggested list.
- It takes you to booking screen.



In booking screen you can change the purpose of the trip. Flexibility to change mobility aid or add passengers when required.

Pick up and drop off notes can be added. Click on the book now button to book a trip.



Download the Alamo Regional Transit App today



**SEGUIN**  
TEXAS

It's real.

## TRAVEL TRAINING

- To educate people on how to use our app to plan and reserve their trips through self registration service
- Group or Individual Training/Instructions to various groups for example senior centers, schools and other organizations, this allows these people the freedom to schedule their transportation at their leisure.



# SEGUIN

TEXAS

It's real.

## Future Transportation Expansion

- [Regional Coordination](#) – Seguin is a "high need" transit dependent area based on the study completed in 2022
- AAMPO conducting a study to connect Seguin to New Braunfels for a IH35 Corridor
- TXDOT possible providing more funding in March 2025 for additional expansion of services

## COST OF SERVICES

It's real.

- **Connect Seguin 2772 Hours for a total yearly cost of \$269,382**

City of Seguin and AACOG share the cost 50/50

- **ADR 3528 hours for a yearly cost of \$ 342,851**

AACOG funds 100%

- **Micro 2640 hours for a yearly cost of \$256,555**

City of Seguin and AACOG share the cost 50/50

❖ **Total Value of the Service is \$868,789**

AACOG \$605,820 City of Seguin \$262,969



**ANY QUESTIONS ?**



ALAMO  
REGIONAL TRANSIT

---

**AACOG**

**THANK YOU FOR YOUR TIME**