

**CITY OF SEGUIN**

**City County Fire/EMS Partnerships**

**June 21, 2022**



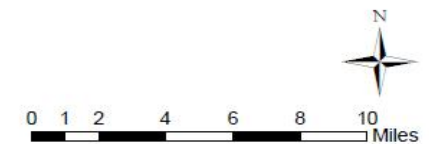
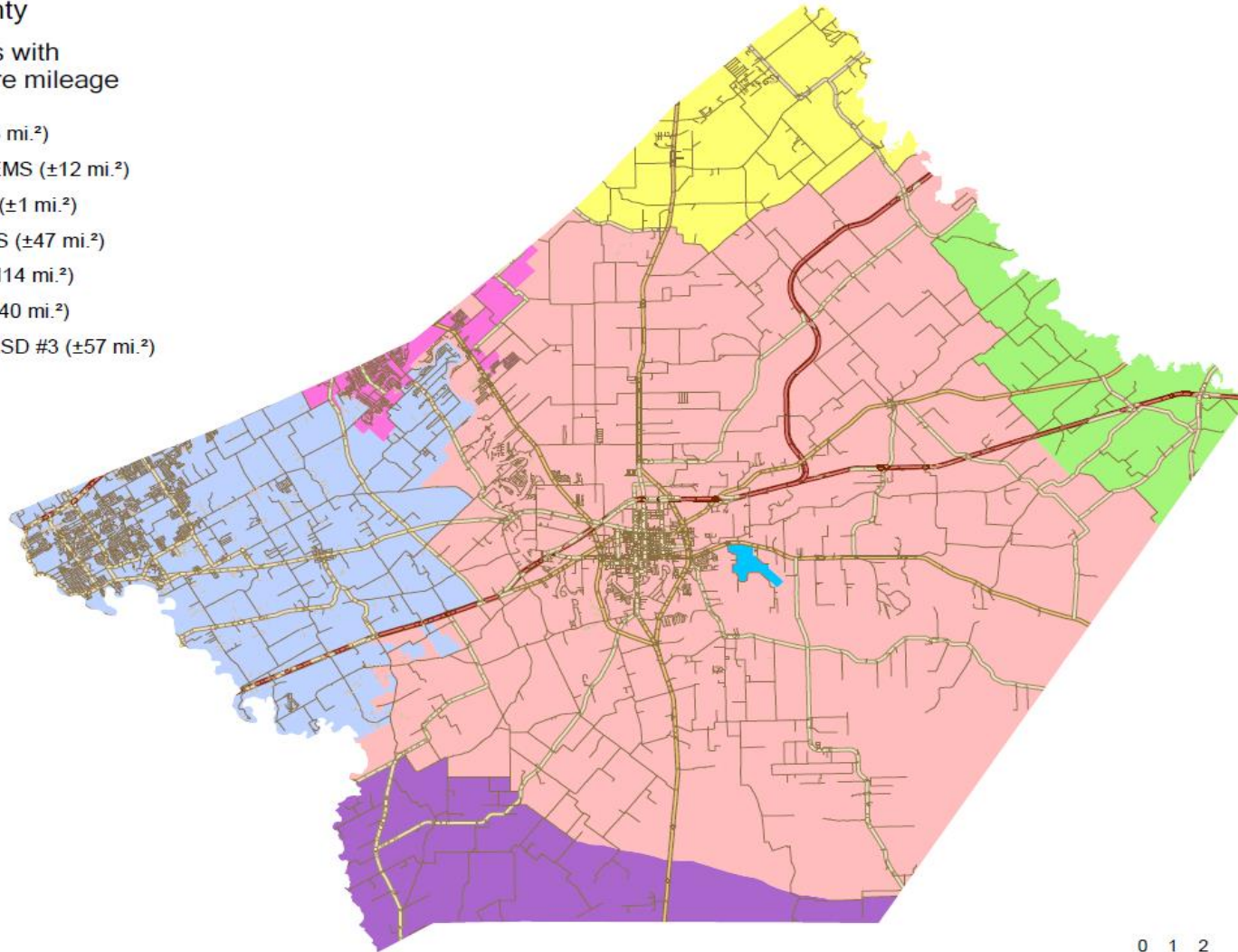
**It's real.**

**Discuss possible City County Possible Partnership  
Opportunities for future Fire/EMS Coverage**

## Guadalupe County

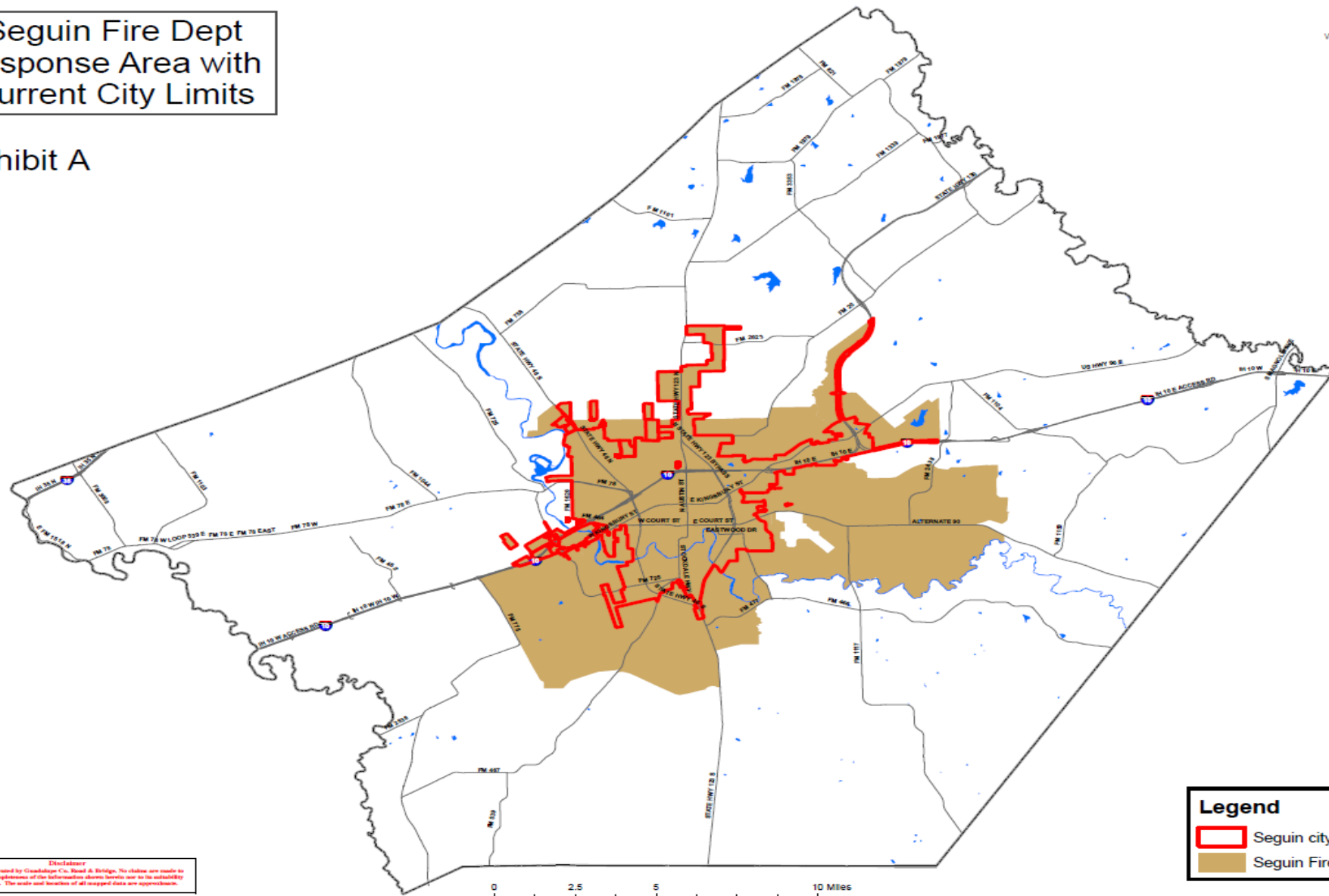
EMS service areas with  
approximate square mileage

- Luling EMS ( $\pm 43$  mi.<sup>2</sup>)
- New Braunfels EMS ( $\pm 12$  mi.<sup>2</sup>)
- JBSA Randolph ( $\pm 1$  mi.<sup>2</sup>)
- San Marcos EMS ( $\pm 47$  mi.<sup>2</sup>)
- Schertz EMS ( $\pm 114$  mi.<sup>2</sup>)
- Seguin EMS ( $\pm 440$  mi.<sup>2</sup>)
- Wilson County ESD #3 ( $\pm 57$  mi.<sup>2</sup>)



# Seguin Fire Dept Response Area with Current City Limits

Exhibit A



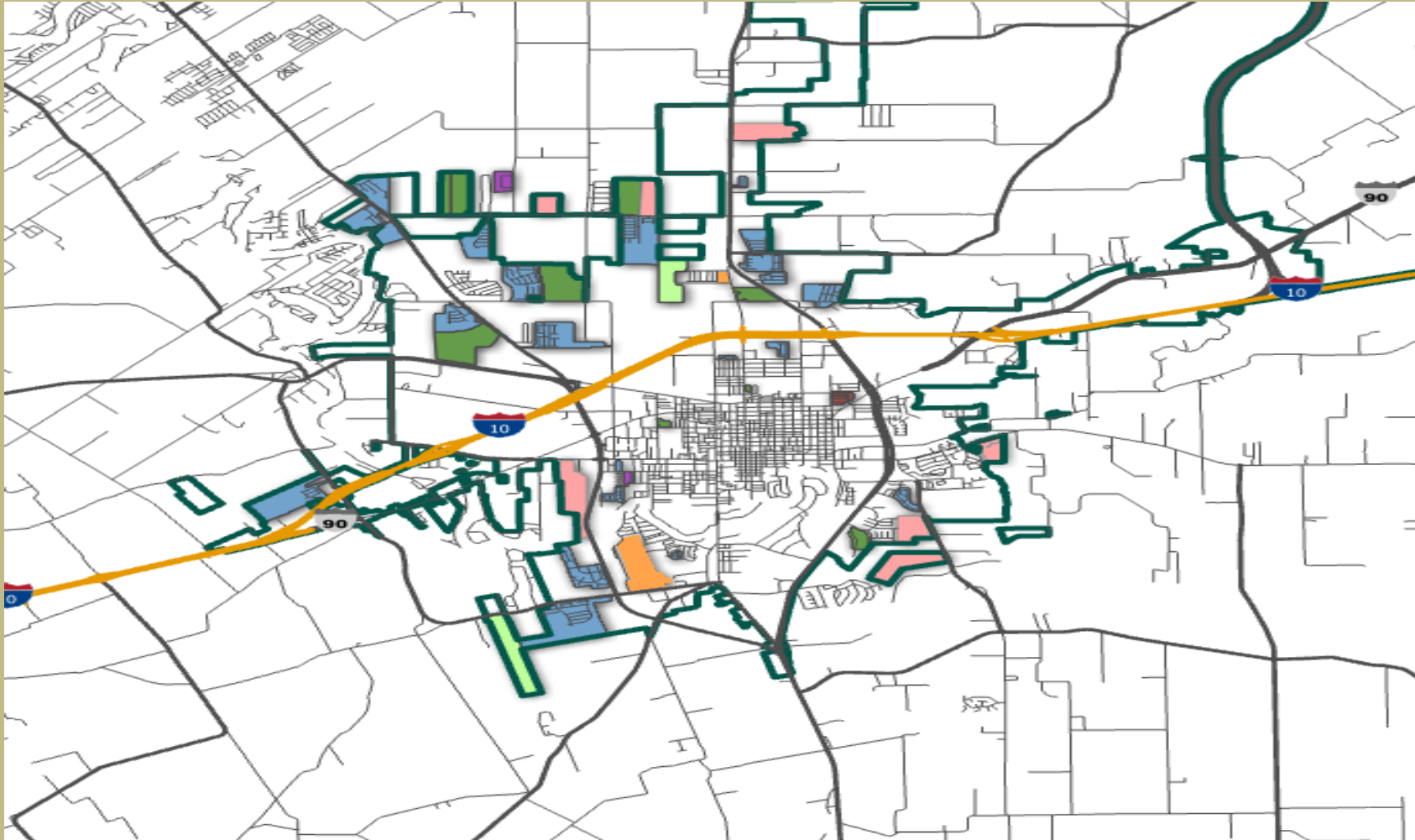
**Disclaimer**  
This map was generated by Granddaddy Co. Road & Bridge. No claims are made to the accuracy or completeness of the information shown herein nor to its suitability for a particular use. The scale and location of all mapped data are approximations.

Genisa Blandford 08/10/2021

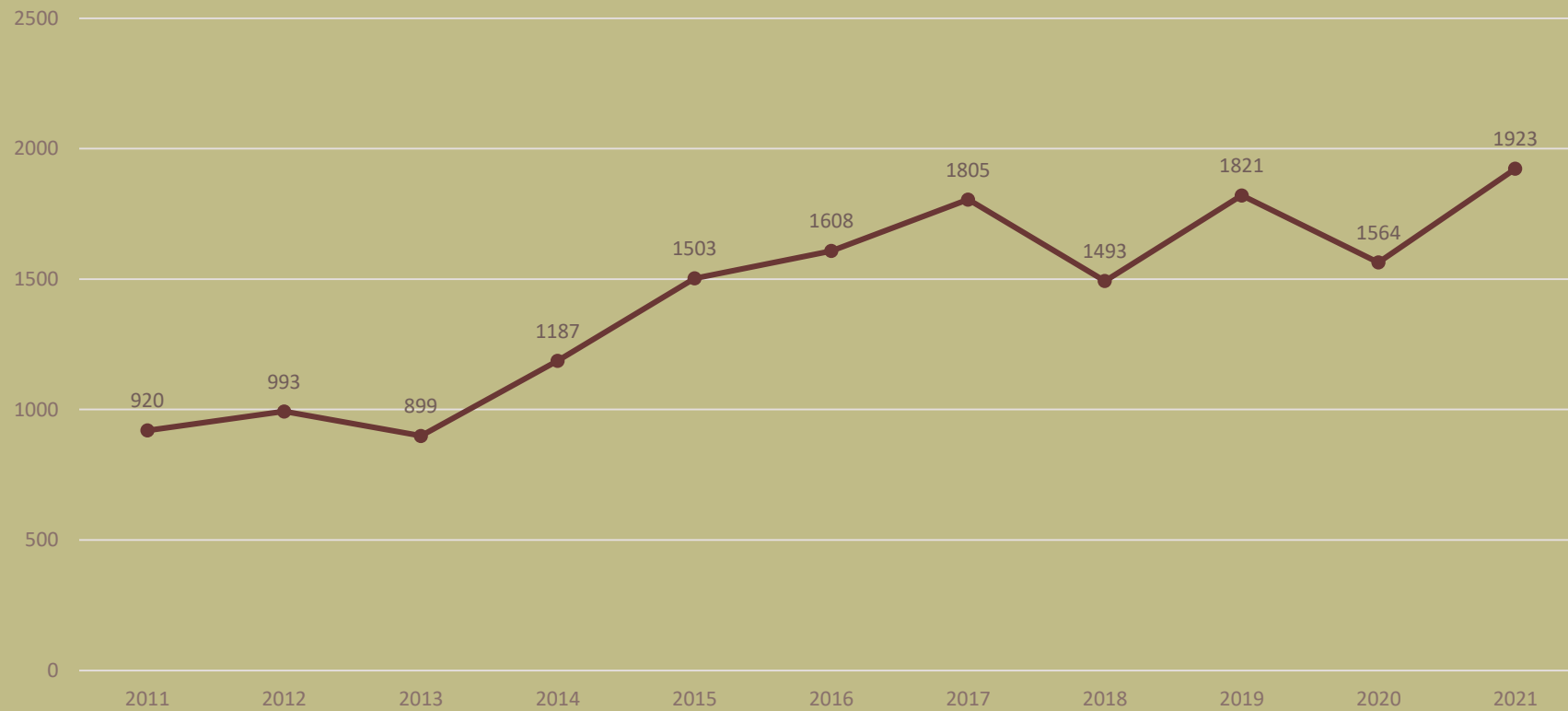
**Legend**

- Seguin city limits
- Seguin Fire Dept.

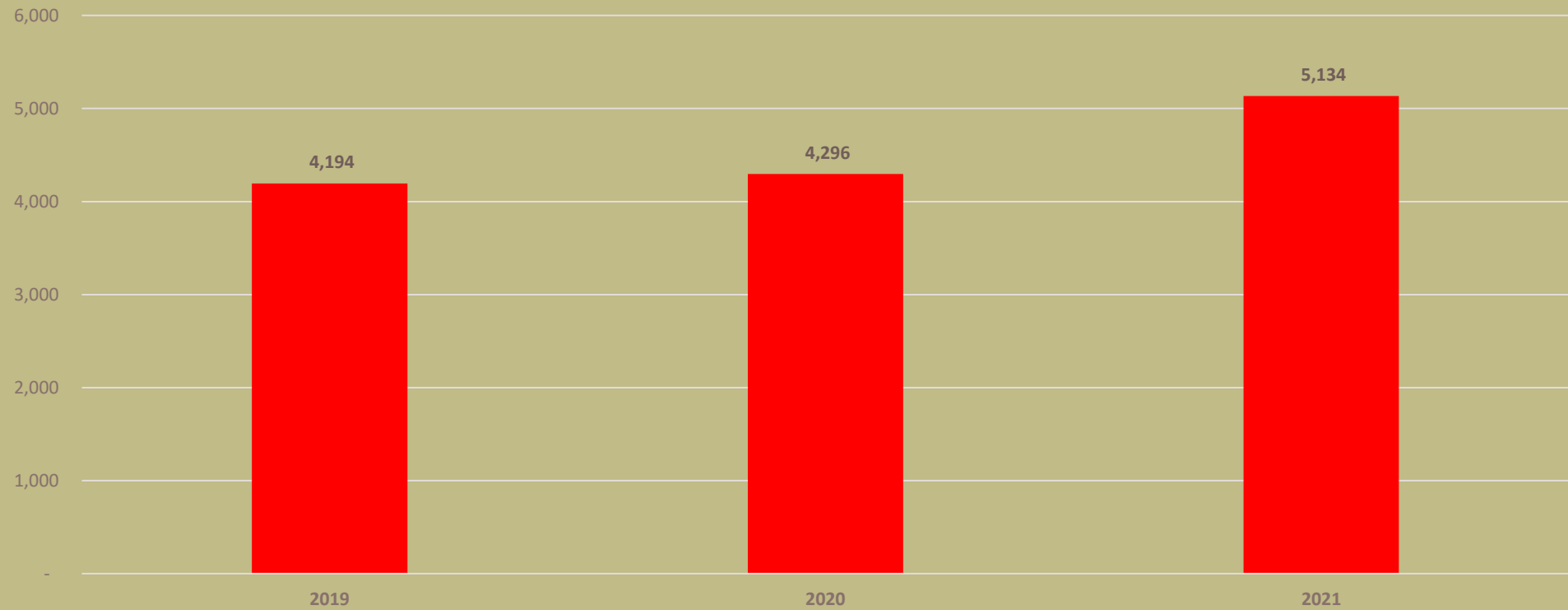
**Housing Dashboard**  
**13,916 Proposed Dwelling Units**  
**47 Subdivisions with 22 under Construction**

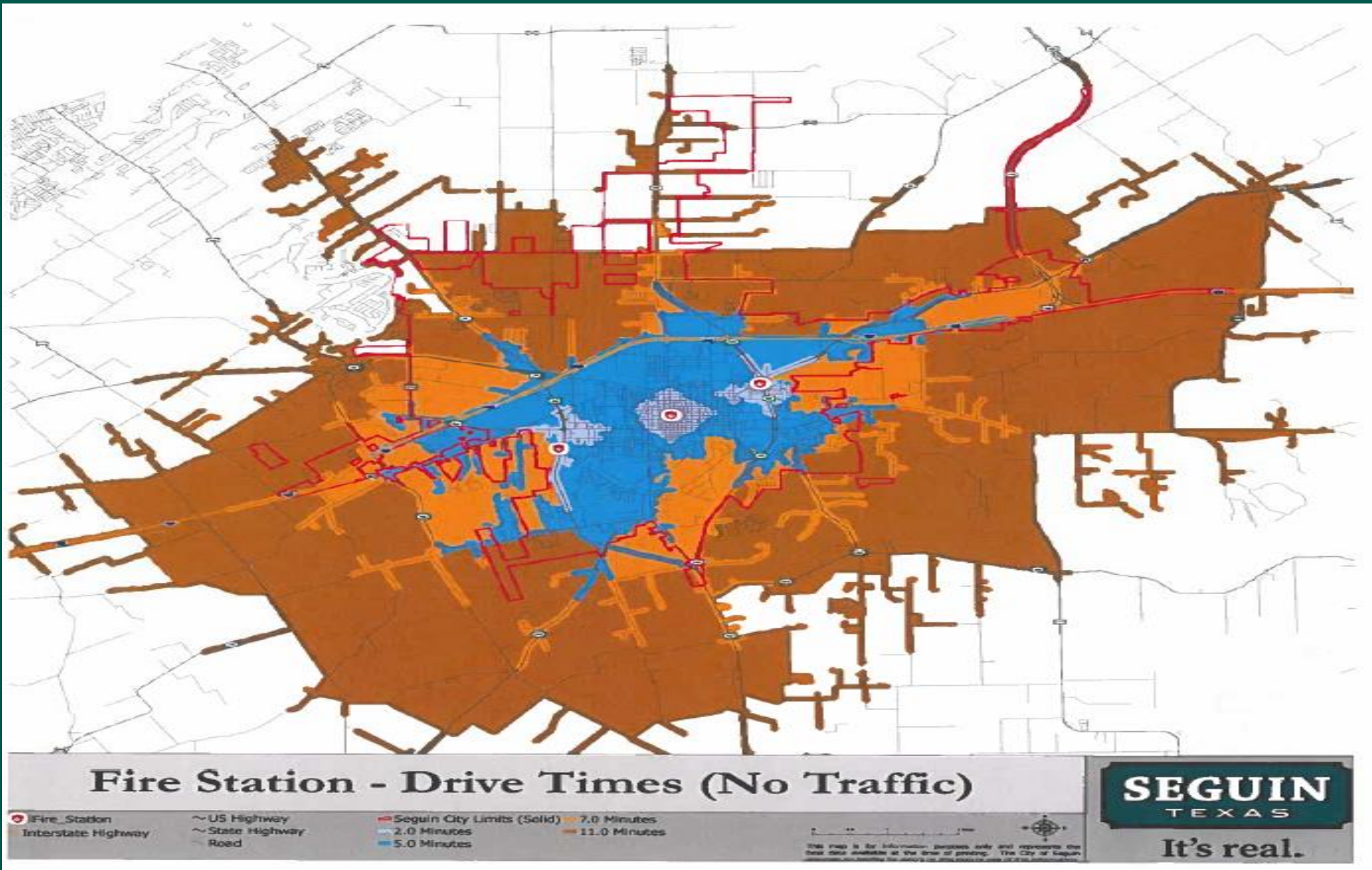


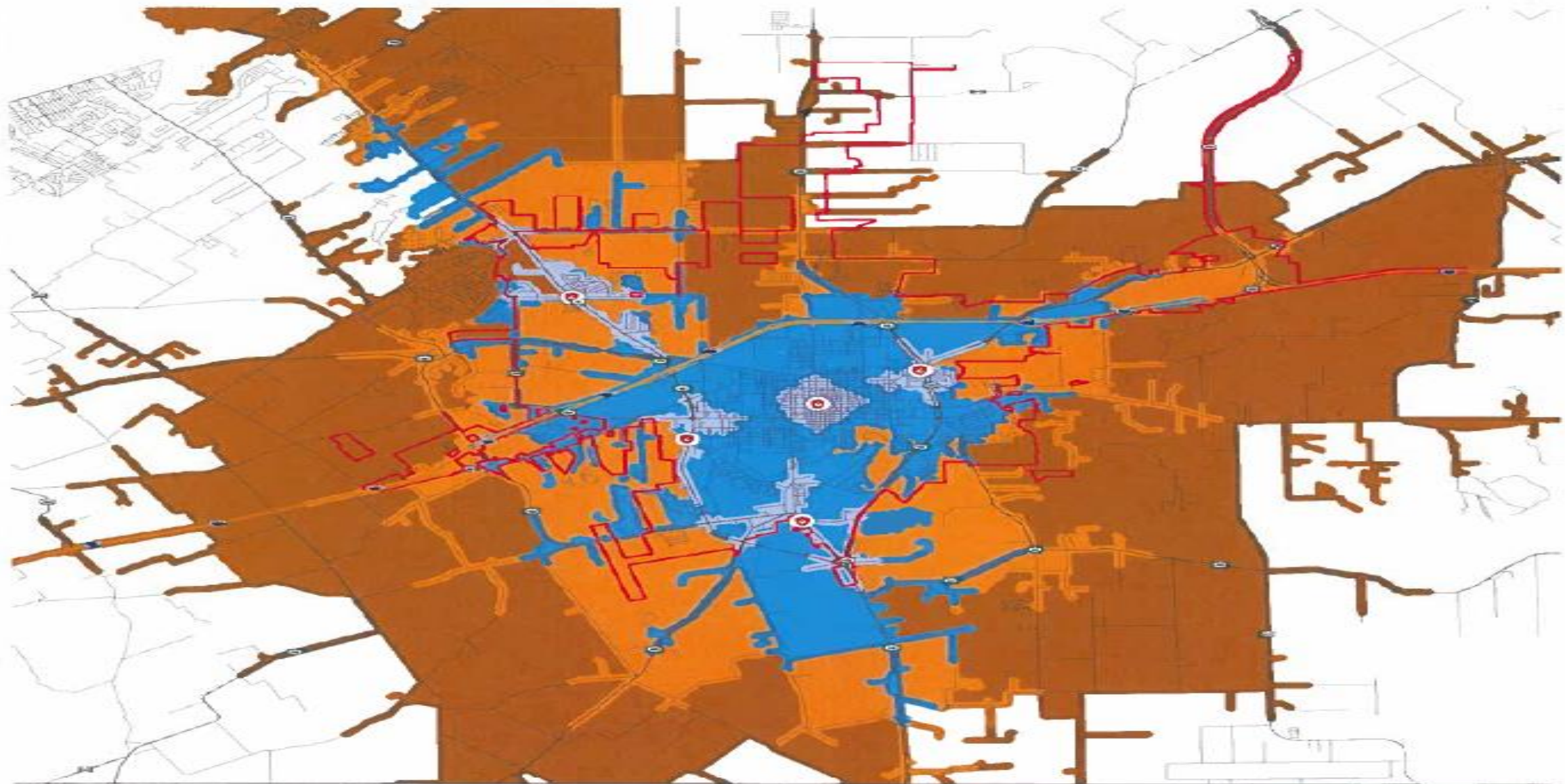
## Total Fire Responses



## EMS CALLS







## Proposed Meadow123 and Rudeloff46 - Drive Times

- Fire\_Station
- Interstate Highway
- US Highway
- State Highway
- Road
- Seguin City Limits (Solid)
- 2.0 Minutes
- 5.0 Minutes
- 7.0 Minutes
- 11.0 Minutes

This map is for information purposes only and represents the best data available at the time of printing. The City of Seguin, Texas, is not responsible for any errors or omissions.

**SEGUIN**  
TEXAS

It's real.

# Station Cost

## Start Up:

Fire Station and Equipment	\$	7,000,000
Fire Engine	\$	900,000
Equipment	\$	150,000
Uniforms & PPE for Personnel	\$	83,000
Ambulance	\$	-
Ambulance Equipment	\$	65,000

<b>Total Start Up Cost</b>	<b>\$ 8,198,000</b>	Estimated Debt Service \$410,000
----------------------------	---------------------	----------------------------------

## Annual Operating Cost:

Personnel (15 Personnel)	\$	1,500,000
Uniforms & PPE	\$	8,000
Operating Supplies	\$	7,000
Utilities	\$	21,000
Fuel	\$	35,000
Training	\$	5,250

<b>Total Annual Operating Cost</b>	<b>\$ 1,576,250</b>
------------------------------------	---------------------

## SEGUIN TAX RATE SCENARIO

- City with \$2.5B in Total Valuation and a \$0.54 tax rate will generate \$13,500,000 in property tax per year.
- Most Cities have around a 50% debt service to operations ratio which leaves \$6.75M for debt service and \$6.75M for operations.
- Seguin Police and Fire Budgets are \$17.5M combined
- A 1 cent tax rate increase on \$2.5B generates \$250,000 in new funding.

## TAX RATE SCENARIO

To open a new fire station costs \$1.5 Million:  
In a City with \$2.5B in valuation you have to raise the tax rate  
by 6 cents to afford the new station without any new value

Or

Values need to increase by \$600,000,000 in one year to fund  
the new station (That's 2,400 \$250,000 homes)

How Do We Accomplish with Least Impact?

## Possible Solutions

- Applied for FEMA SAFER Grant 6 Firefighters (No Match for 3 years)
- Budget Capacity over next several years with one-time expenses
- Explore alternatives with County to cost participate for both
  - Fire Station Infrastructure
  - Fire Station Personnel

# Benefits

- Better Service for City and County Residents
- Maintain ISO Rating of 2
- Minimize Financial Impact to Residents by Partnering

QUESTIONS?