

It's real.

Memorandum

To: Mayor and City Council Members
Steve Parker, City Manager

From: Melissa Reynolds, P.E., MPA, CFM, City Engineer

Through: Rick Cortes, Deputy City Manager

Subject: Ordinance establishing an all-way stop at the intersection of Peach Street and Palm Street

Date: June 3, 2025

Historical Background

Engineering staff received a request for an all-way stop at the intersection of Peach Street and Palm Street due to safety concerns related to speeding on Peach Street.

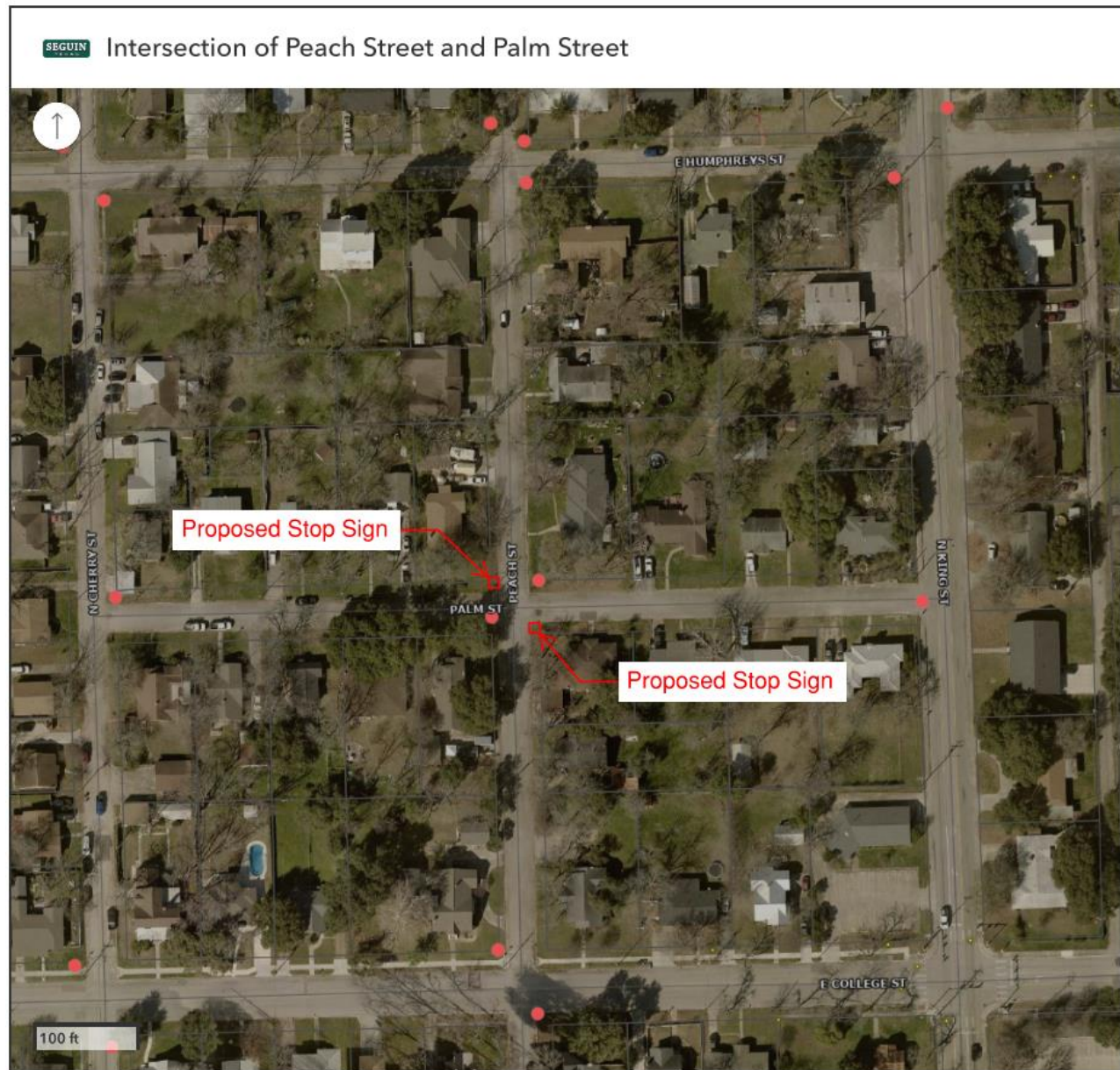
The intersection has four approaches and is currently controlled by stop signs on Palm Street. The speed limit on Peach Street and Palm Street is 30 mph. Neither street is identified on the Master Thoroughfare Plan (MTP). However, both streets directly connect to roadways classified as collectors on the MTP (King Street and College Street).

An engineering review was conducted in accordance with the Texas Manual on Uniform Traffic Control Devices (TMUTCD). Multi-way stop control is used where the volume of traffic on the intersecting roads is approximately equal. However, the minimum vehicular volume entering the intersection from the major street approaches shall average at least 300 vehicles per hour for any 8 hours of an average day. No traffic count data was collected for this intersection. TxDOT provided traffic counts for Heideke Street at a rate of 864 average daily trips. Peach Street and Palm Street do not meet the minimum vehicular volume required per Section 2B.07 of the TMUTCD. The intersection crash history was reviewed by staff, of which no crashes were reported since 2021.

Action Requested

Staff does not recommend that an all-way stop be installed at the intersection, as installing traffic control when it is not warranted may lead to non-compliance, furthering any safety concerns at the intersection. Additionally, the *TMUTCD* states that stop signs should not be used for speed control.

It's real.

**Street Signs - Neighborhood Scale** Stop Sign**Procurement Methodology & Funding Source**

There are no funding impacts to approval of this ordinance.

Staff Recommendation

Engineering judgement does not warrant an all-way stop at this time.

ATTACHMENTS

1. 2025.06.03 Ordinance Peach Stop Sign