




Public Works

Council Stormwater Maintenance Program Update

5/19/2026



Agenda

- Why It Matters
- Overview of Operations
- Before and After
- Looking Forward

Why It Matters

- Stormwater isn't just drainage—it's:
 - Flood risk reduction
 - Infrastructure protection
 - Water quality compliance
 - Constituent service level



Overview of Operations

Right of Way Maintenance

- Litter Pickup
- Channel and Detention Pond Mowing

Street Sweeping

- Citywide Roadway Debris Collection

Stormwater Operations

- Inlet and Storm Pipe Inspection/Cleaning
- Channel Regrading and Maintenance
- Problem Area Inspection During Rain Events

Trash Collected From Roadside Rights-of-Way

Not Residential Pickup – Collected by Mowing Crews

Every Week



≈ 25 Trash Cans

Each Month



≈ 110 Trash Cans

Every Year



≈ 1,300 Trash Cans

Over 1,300 Trash Cans of Litter Removed Annually from Our Roadways



Street Sweeping Comparison



CAMP ST
100 MESQUITE ST

WWW.SEWEREQUIPMENT.COM

SEGUIN
TEXAS
PUBLIC WORKS

27603

SEWER EQUIPMENT
OF AMERICA
900
ECO

STOP
WATER

⚠ DANGER
ELECTRICAL HAZARD
KEEP CLEAR

Catch Basin

1,438

Manhole

460

Outlet

166

Culvert

905

Gravity Main (Pipe)

227,596.2 ft

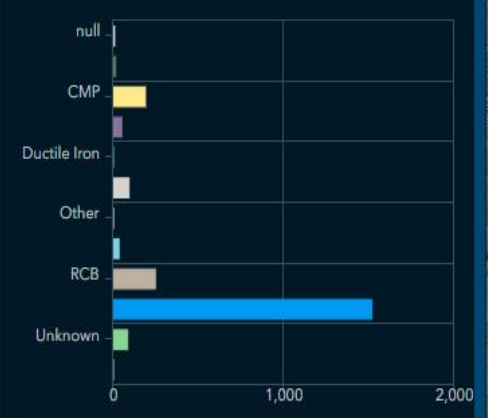
43.1 mi

Open Channel

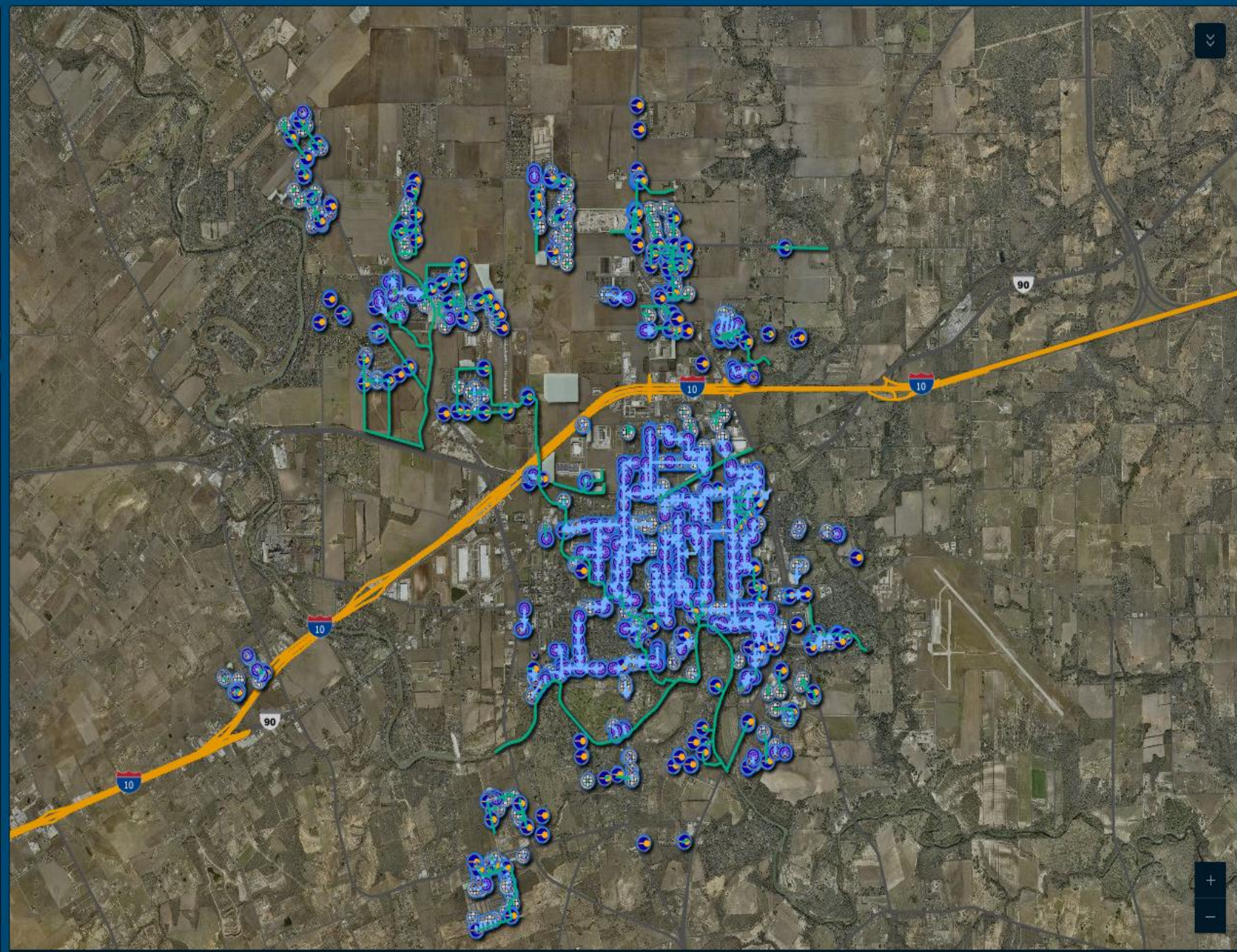
243,664.3 ft

46.1 mi

Gravity Main (Pipe Material)



Gravity Main (Pipe Diameter)



Catch Basin

377

Manhole

157

Outlet

23

Culvert

34

Gravity Main (Pipe)

60,692.8 ft

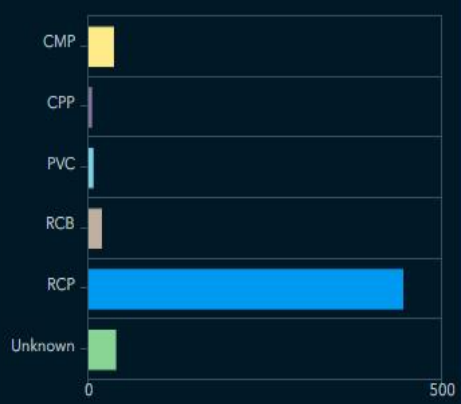
11.5 mi

Open Channel

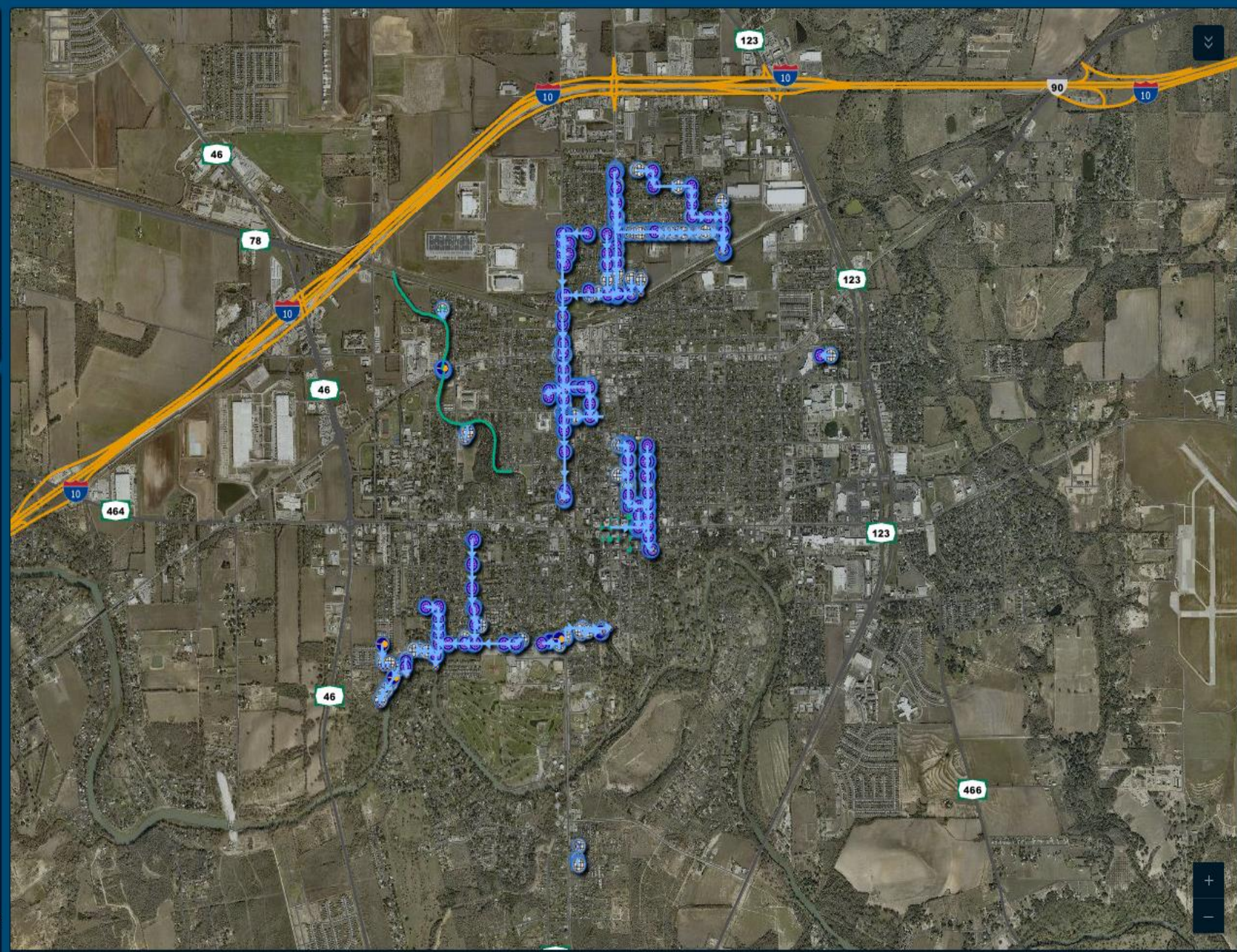
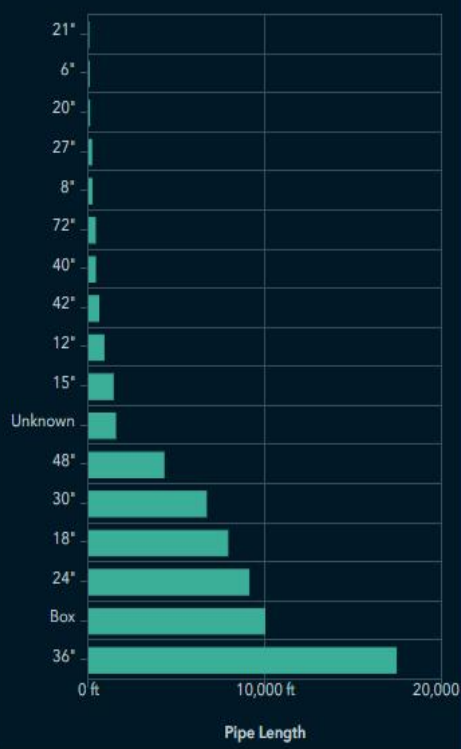
8,669.9 ft

1.6 mi

Gravity Main (Pipe Material)



Gravity Main (Pipe Diameter)



SEGUIN CITY HALL



2,000 CUBIC YARDS OF DEBRIS



CLEAN PIPES. LESS POLLUTION. HEALTHIER WATERWAYS.

Thank you to our Stormwater Crew for keeping Seguin clean and our waterways clear!

Before and After



After



Before and After



Before



Before



After



Before and After



Before



After



Before



After



Looking Forward

- Asset Inventory Completion
- CCTV Camera Capabilities
 - In-depth Inspection
- Additional Crew Members
 - More Productivity
 - Faster Response Times
- MS4 Regulatory Compliance Alignment



Thank You!



City Council



GIS/IT



Finance/Purchasing



Utilities



Public Works Crews