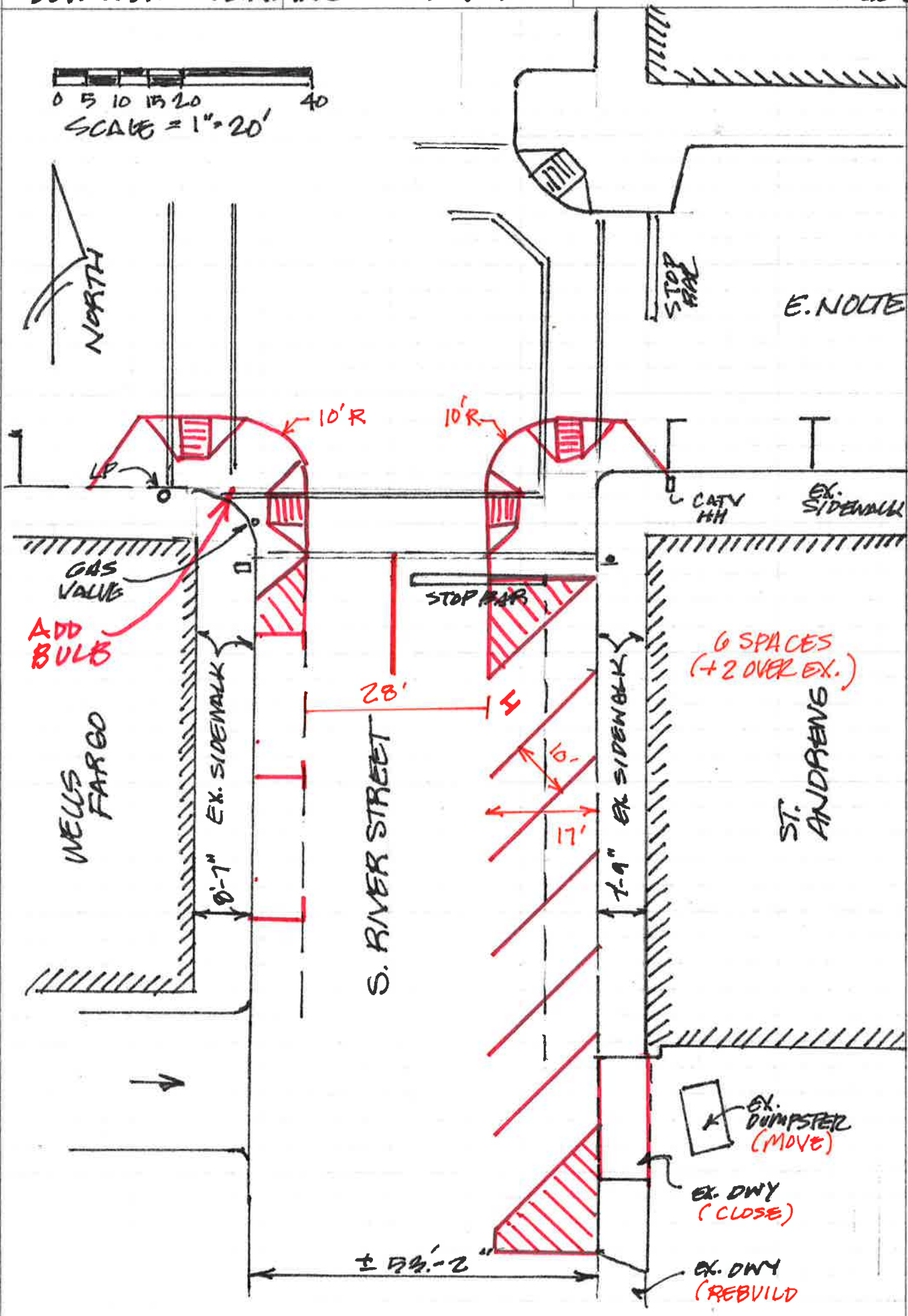
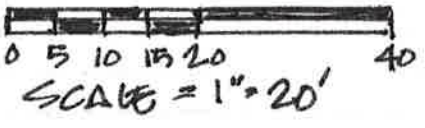


No. 937 811E
Engineer's Computation Pad



ADD BULB

WELLS FARGO

EX. SIDEWALK

S. RIVER STREET

28'

STOP BAR

16'
17'

EX. SIDEWALK

6 SPACES
(+2 OVER EX.)

ST. ANDREWS

EX. DUMPSTER (MOVE)

EX. DRY (CLOSE)

EX. DRY (REBUILT)

± 172'-2"

GAS VALVE

CATV HH

EX. SIDEWALK

STOP BAR

E. NOLTE