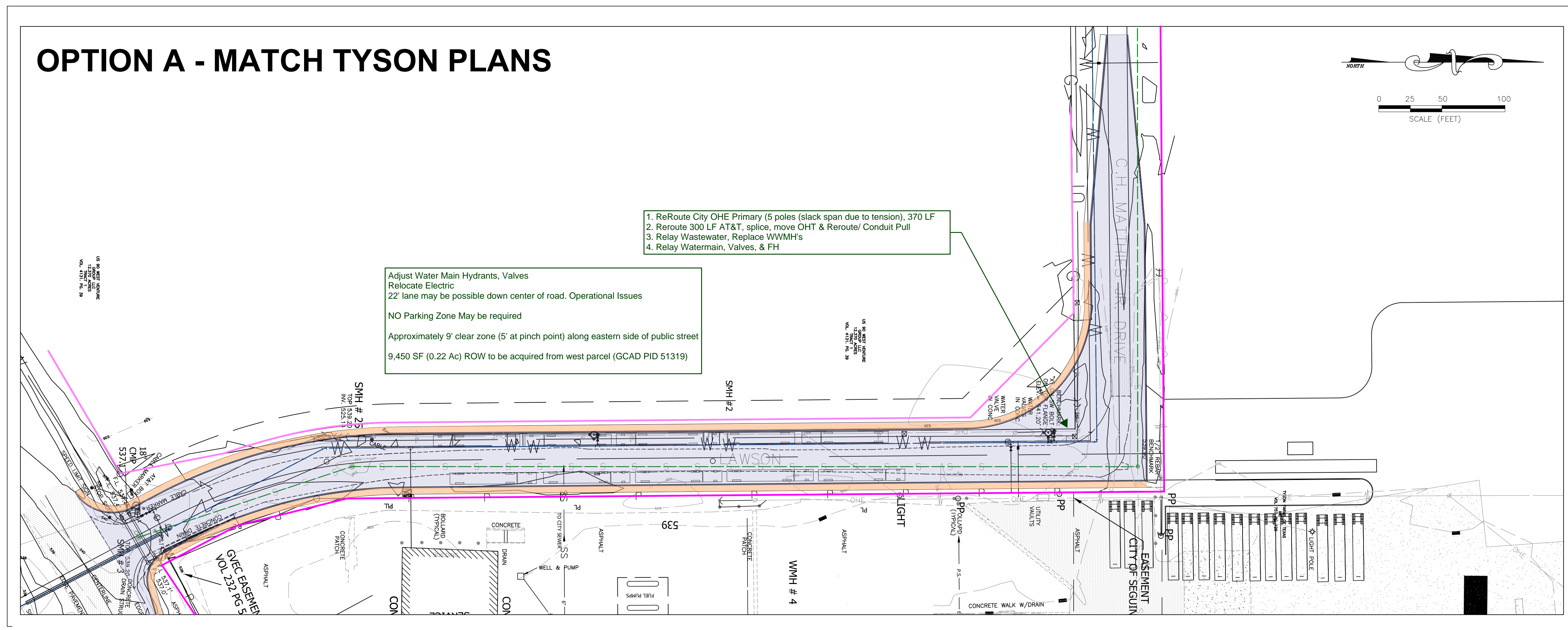
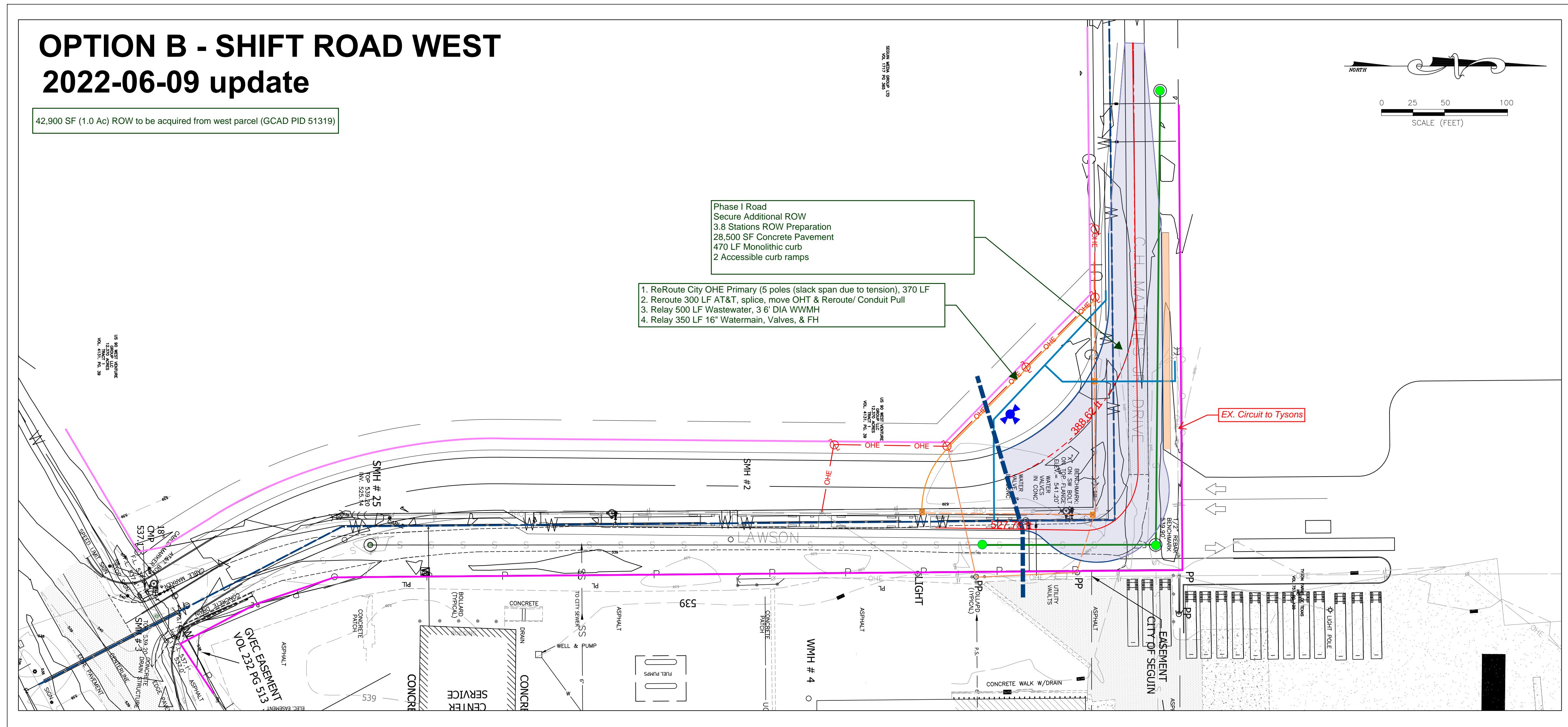


OPTION A - MATCH TYSON PLANS



OPTION B - SHIFT ROAD WEST 2022-06-09 update



**SCHEMATIC
DESIGN FOR
REVIEW
PURPOSED ONLY**

**PHASE I EXHIBIT
2022-06-10**

BENCHMARK LIST
VERTICAL DATUM FOR THIS PROJECT IS NAVD83. UTILIZING THE WFS STATEWIDE COOPERATIVE GPS NETWORK.

TBM A - CUT "SQUARE" ON CONCRETE AT THE NORTHEAST INTERSECTION OF CAMP STREET AND HOLTE STREET.
ELEV=525.20'

TBM B - RAILROAD SPIKE IN A POWER POLE AT THE NORTHEAST INTERSECTION OF S. RIVER STREET AND WASHINGTON STREET.
ELEV=525.73'

TBM C - RAILROAD SPIKE IN POWER POLE IN THE SOUTH LINE OF WASHINGTON STREET, #102' WEST OF S. AUSTIN STREET.
ELEV=523.11'

DESIGN BY:	MES	NO.	REVISION	DATE
DRAWN BY:	MES			
CHECKED BY:	JRR			
SCALE:	V: 1"=2' H: 1"=20'			
JOB NUMBER:	TCF2016-033			

CAPITAL PROJECTS & SEDC

LAWSON STREET RECONSTRUCTION

SEGUIN TEXAS

EXH

JUNE 2022