

An aerial photograph of Seguin, Texas, showing a mix of urban buildings, green trees, and a clear blue sky. In the background, a large water tower and industrial structures are visible. The foreground shows a street intersection with cars and a large building with a flat roof.

**SEGUIN**  
TEXAS

**It's real.**

**SEGUIN, TX**  
**GIS**

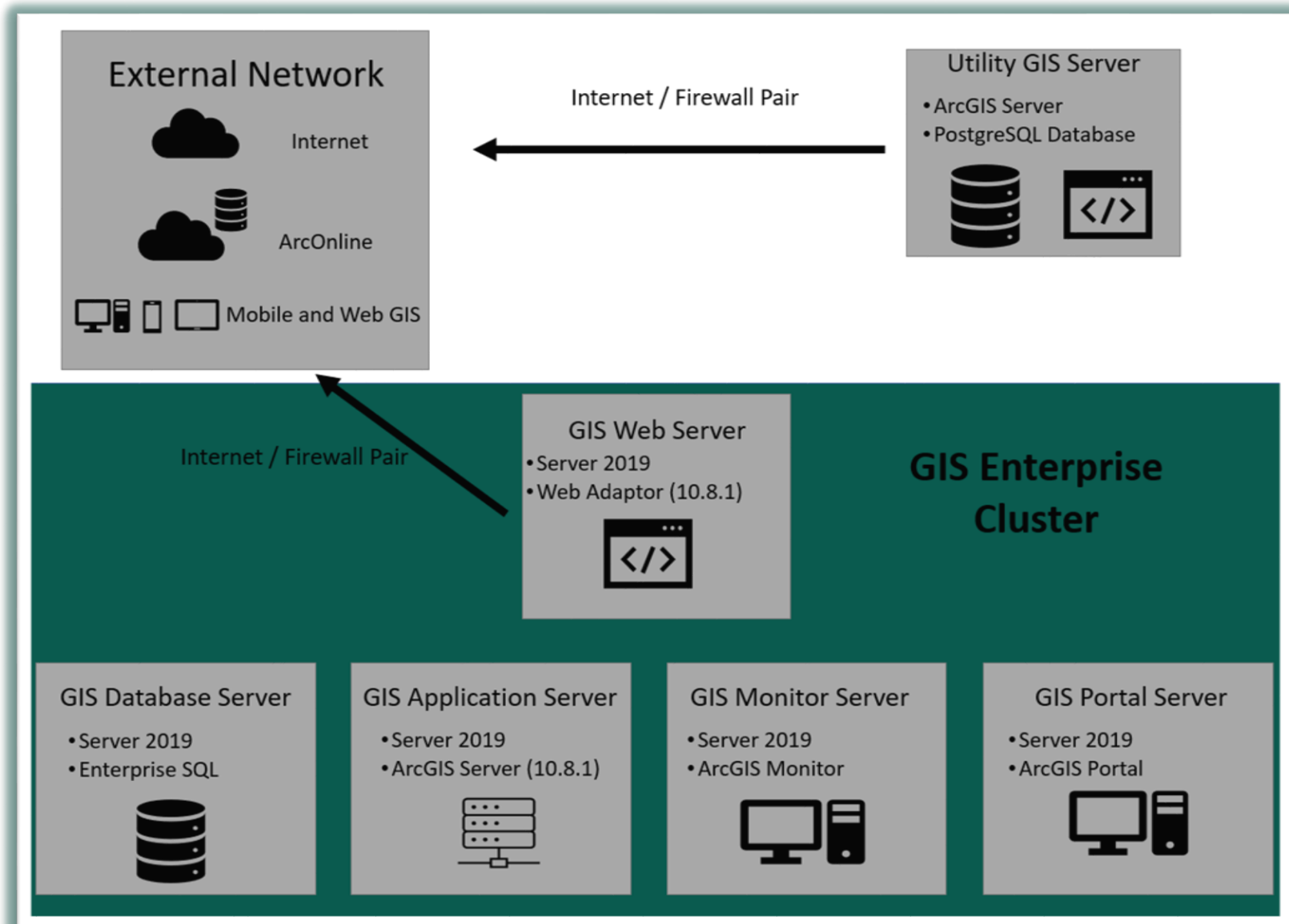
**GIS Manager: Travis Acklin**



# GIS Infrastructure

## Key Features:


- Enterprise License (January 2022)
- New GIS Enterprise Cluster to manage workload
- Infrastructure in place for growth

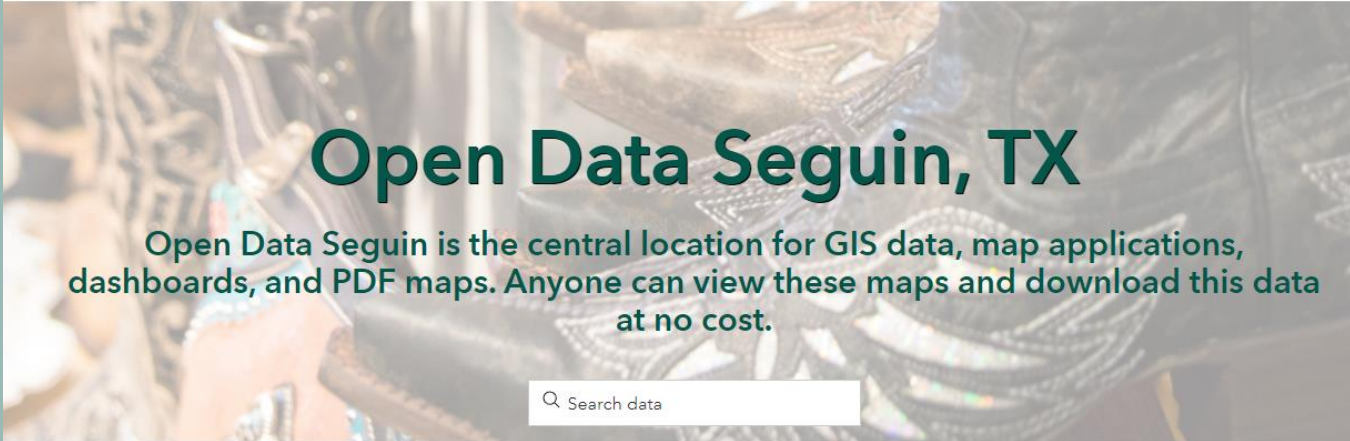


# Seguin, TX GIS Homepage

## Key Features:

- “Home” page for GIS
- GIS Data Downloads
- PDF Maps to Download
- Infographics (Census Stats)
- GIS Applications



[Open Data Seguin](#)
[Interactive Maps](#)
[PDF Maps](#)
[Infographics](#)
[Disclaimer](#)




## Open Data Seguin, TX

Open Data Seguin is the central location for GIS data, map applications, dashboards, and PDF maps. Anyone can view these maps and download this data at no cost.


### Browse Open Data:




Address Data



Transportation Data




Recreation Data




Boundary Data

### Featured Apps



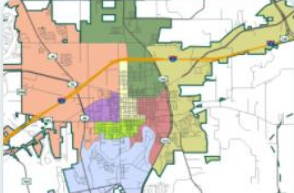
**City Projects Dashboard**

The City Project Dashboard can be used by the general public and other interested parties t...




**Proposed Housing Dashboard**

Information on the Subdivision Development throughout the City of Seguin, TX.



**City Services App**

Application that will provide information on: Council Districts, Garbage Day, Recycl...



**City of Seguin - Parks and Recreation**

The Parks Department operates the city's recreation and aquatic programs along with...

# Data Downloads

## Key Features:

- GIS Data Downloads
  - Addresses
  - CCN Sewer
  - CCN Water
  - City Limits
  - Park Boundary
  - Streets
  - More Data coming soon!

The screenshot displays the Seguin Texas Open Data portal. At the top, there's a navigation bar with links: Open Data Seguin, Interactive Maps, PDF Maps, Infographics, and Disclaimer. Below this is a search bar. The main content area is divided into two columns. The left column contains filters for 'Last Updated' (with a date range selector), 'Categories' (GIS, Open Data Download), and 'Tags' (Seguin, Texas, Boundaries, Address, Boundary). The right column shows a list of data layers under the 'Data' tab, with 1 - 8 of 8 results. The layers listed are: Street Centerline Open Data, Park Boundary Open Data, and Address Open Data. Each layer entry includes its name, source (Seguin Utility Operations), type (Feature Layer), and last updated date. Overlaid on the right is a 'Download Options' modal window for the 'Address Open Data' layer. It shows 14,867 records and provides download buttons for CSV, KML, Shapefile, GeoJSON, and File Geodatabase. Each download option includes the file creation date (Mar 21, 2022, 08:58) and file size. In the background, a map of Seguin, Texas, is visible, showing a grid of streets with blue dots representing address locations. The map includes a legend, a scale bar, and a '14,867 records' indicator.



# Document Downloads

## Key Features:

- PDF Downloads
  - Updated Monthly
  - City Council Districts
  - City Services Type Maps
  - Park Maps
  - More Maps coming soon!

**SEGUIN**  
 TEXAS

[Open Data Seguin](#)
[Interactive Maps](#)
[PDF Maps](#)
[Infographics](#)
[Disclaimer](#)

## PDF Maps

View, Download, and Print

The PDF maps on this page are for information purposes only and represent the best data available at the time of printing. The City of Seguin assumes no liability for errors on this map or use of this information. The below maps are updated monthly and can be viewed on any device.

### City Services PDFs

Brush Route Boundary

City Council Districts

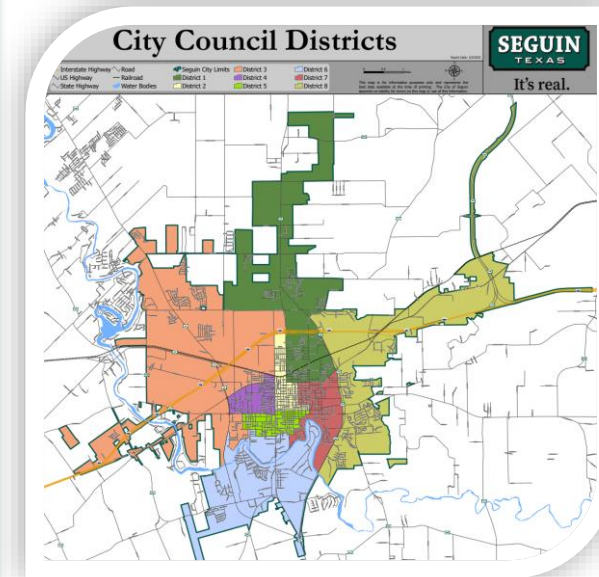
City Limits and ETJ Boundary

Garbage Routes

Recycling Route

Seguin Area Floodplain

Seguin Area School District



### Parks and Recreation PDFs

Manual C. Castilla Park

Max Starcke Park East

Max Starcke Park West

Park West

Sebastopol House State Historic Site

Seguin Event Center

Walnut Springs and Memorial Rose Garden Park

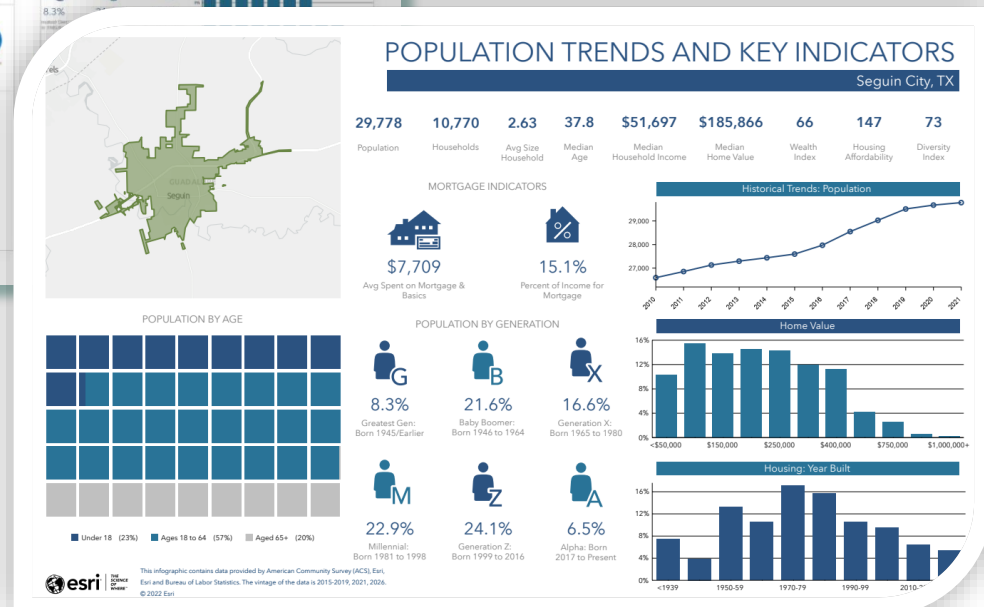
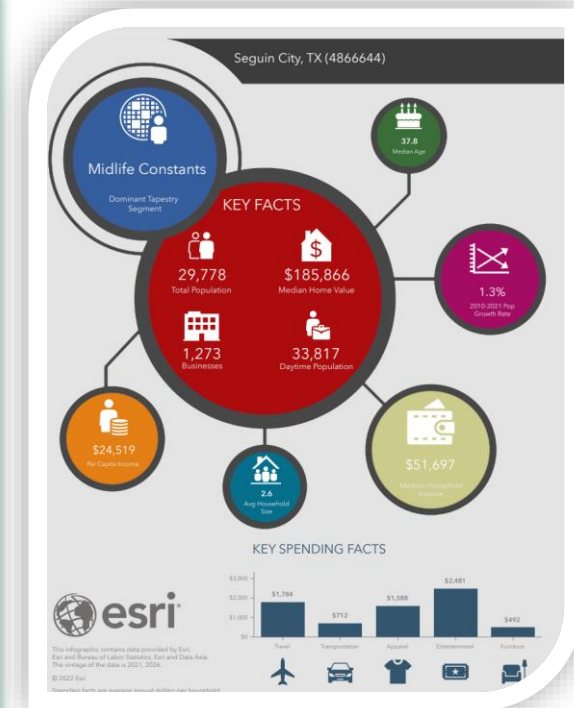
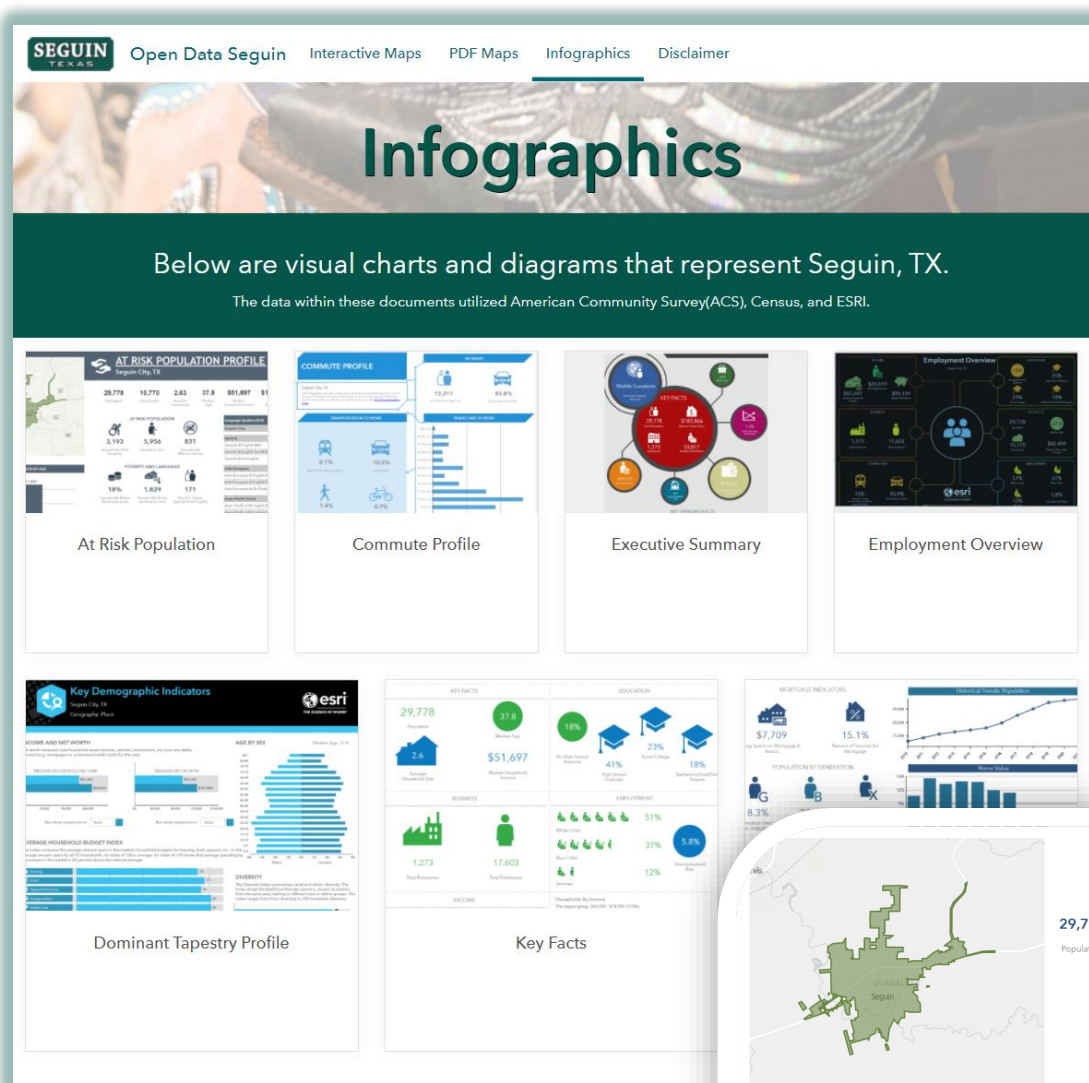
Walnut Springs Trail

# Infographics

## Census Based Charts and Graphs

### Key Features:

- Infographic PDF Downloads
  - Commute Profile
  - Executive Summary
  - Population Trend





# Interactive Maps

## Key Features:

- Dashboard Applications
  - City Projects
  - Proposed Housing
- Traditional Applications
  - City Services
  - Low Water Crossings
  - Seguin Downtown Parking
  - Parks and Amenities
- Storybook Maps
  - Parks and Recreation
- More Apps coming soon!

Open Data Seguin
Interactive Maps
PDF Maps
Infographics
Disclaimer

# Interactive Maps

[View Info...](#)

Interactive maps are designed and published using live data maintained by city staff.

New maps are constantly being made and added to the open data site.

**City Projects Dashboard**

The City Project Dashboard can be used by the general public and other interested parties t...

**City Services App**

Application that will provide information on: Council Districts, Garbage Day, Recycl...

**City of Seguin - Parks and Recreation**

The Parks Department operates the city's recreation and aquatic programs along with...

**Low Water Crossing Public App**

Location of Low Water Crossings within Seguin, TX. Conditions can change rapidl...

**Park and Amenities Filter App**

Seguin Parks and Amenities Inventory. Inventory is based upon site observations, GIS data, and existing City data. Inventory...

**Proposed Housing Dashboard**

Information on the Subdivision Development throughout the City of Seguin, TX.

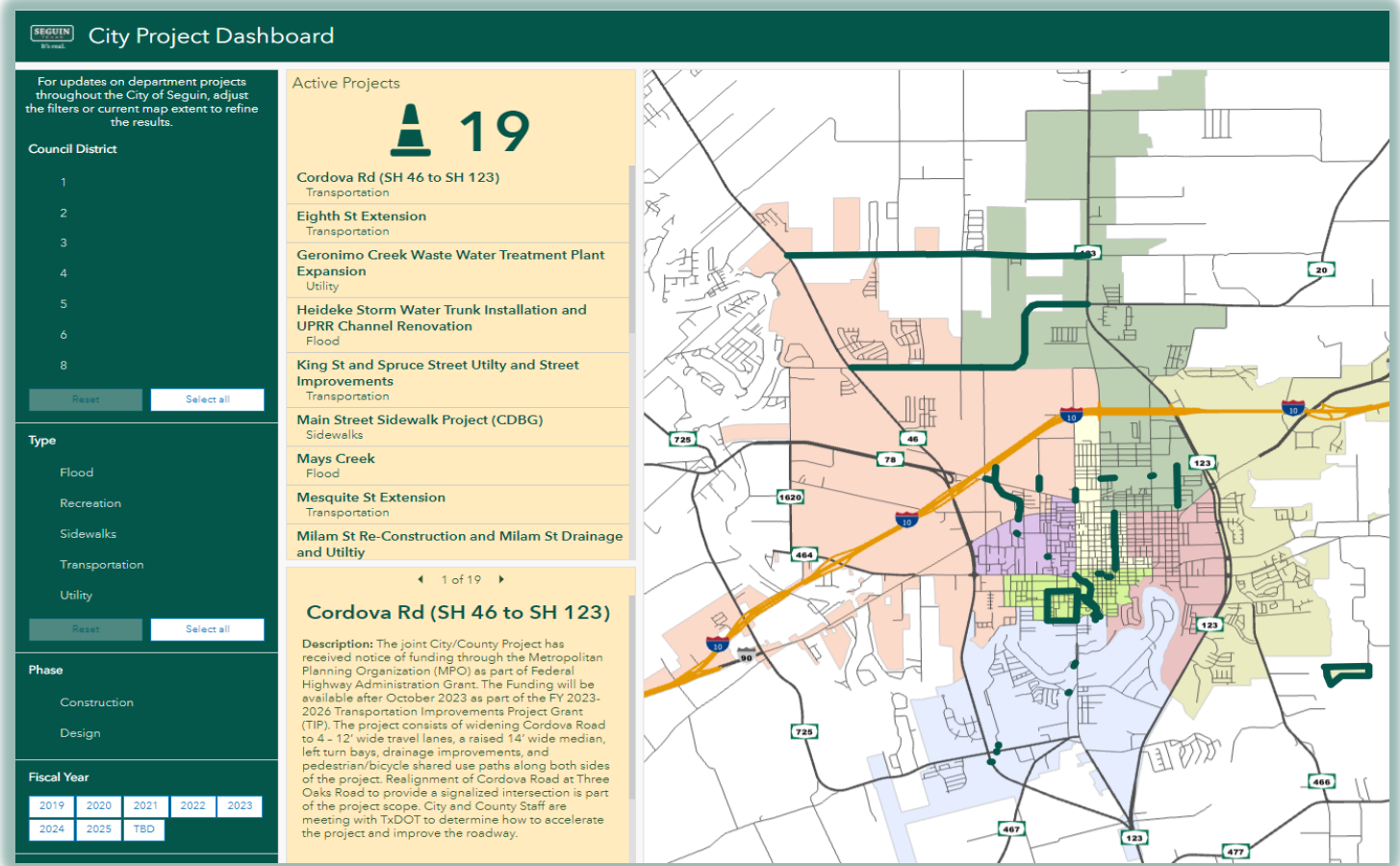
**Seguin Downtown Parking App**

Parking in Downtown Seguin, TX

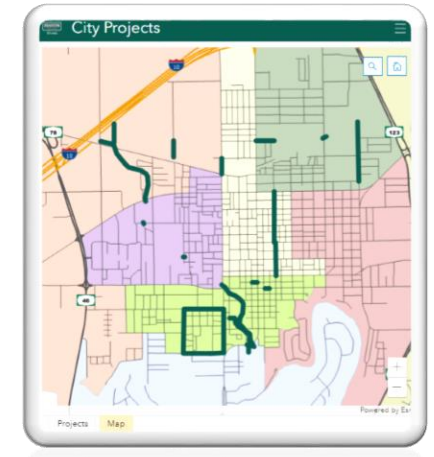
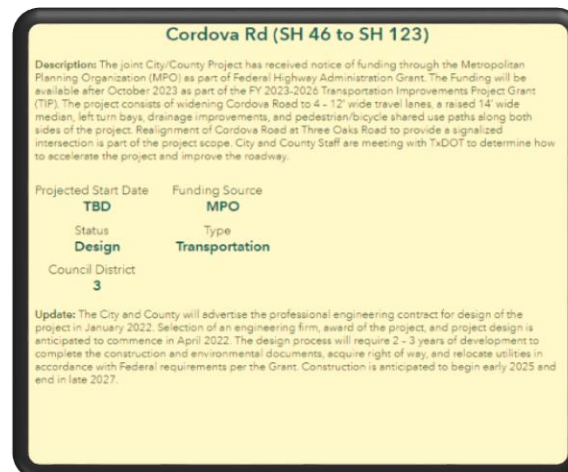
# City Project Dashboard

## Key Features:

- Filter Based Data
  - Council District(Left Side)
  - Project Type (Left Side)
  - Spatial Filter (Zoom In)
- Detailed Information on Project
  - Description
  - Updates and Status



## Tablet and Mobile Friendly

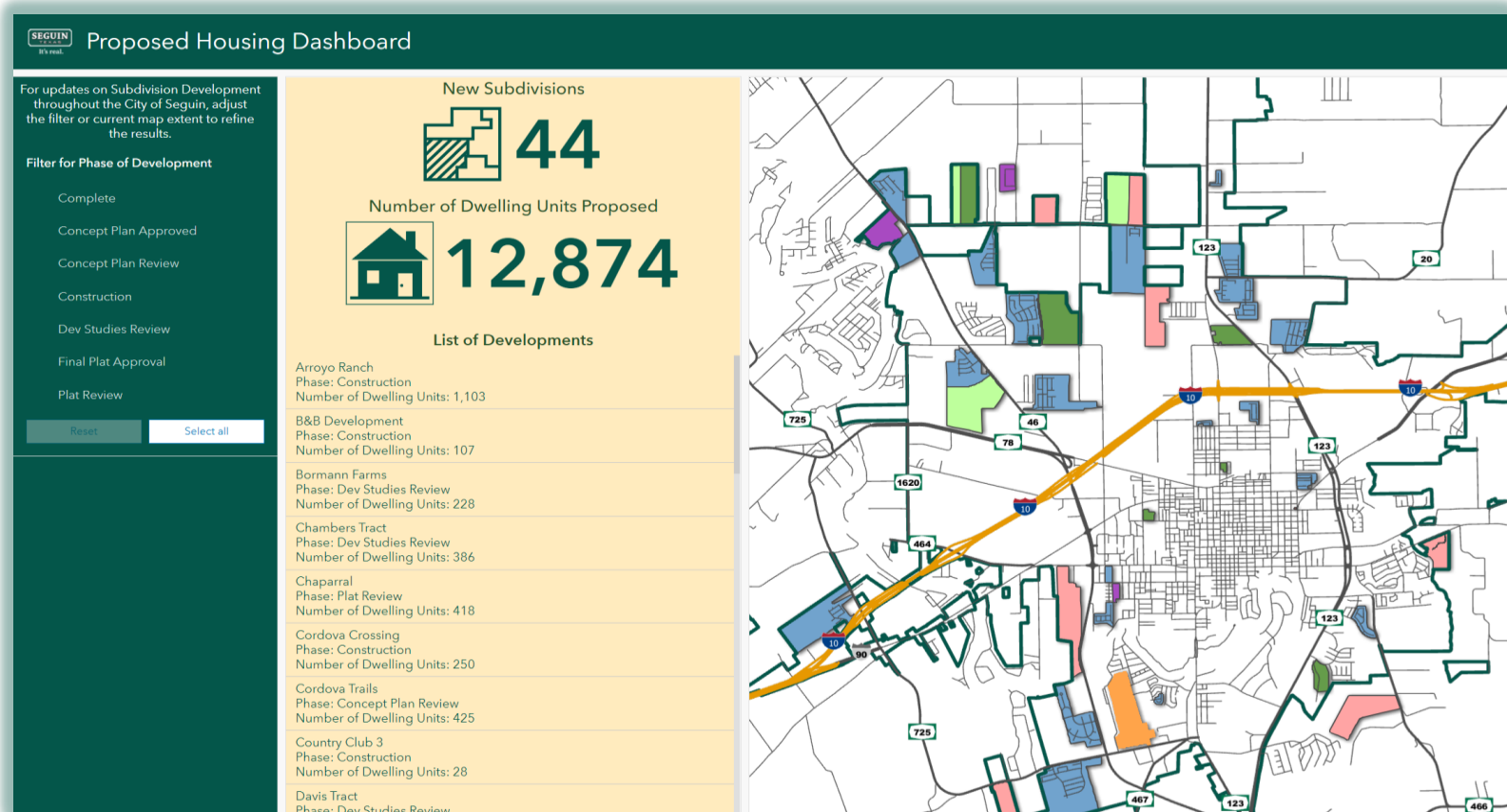




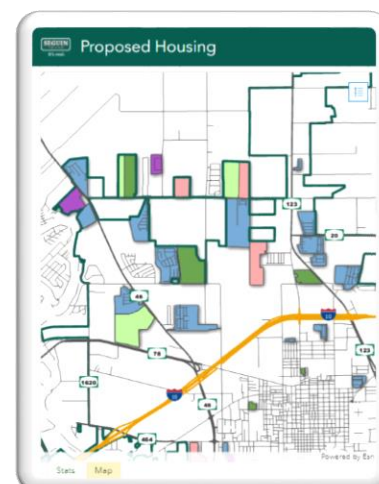
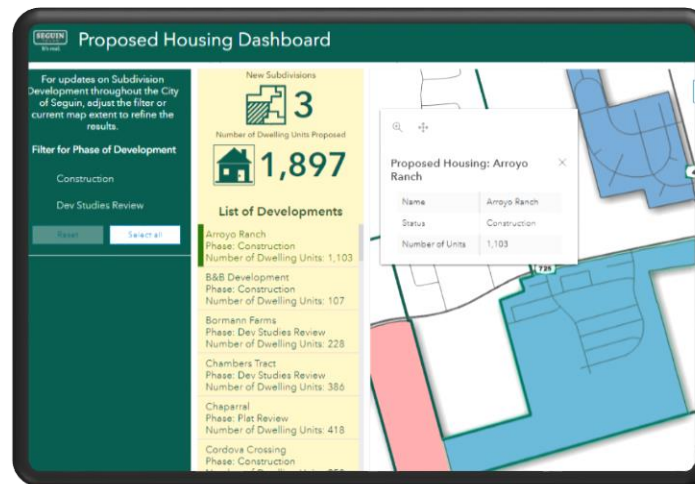
# Proposed Housing Dashboard

## Key Features:

- Filter Based Data
  - Phase Filter
  - Spatial Filter (Zoom In)
- Stats on Development
  - Number of New Subdivisions
  - Number of Dwelling Units



## Tablet and Mobile Friendly



# City Services Application

## Key Features:

- Search for Address
- Information based on Location
  - Council District
  - Zoning
  - Garbage, Recycle, and Brush Days
- More to Come!

City of Seguin - City Services

Address: 3027 N AUSTIN ST

Council District 1

Joe Rea

jrea@seguintexas.gov

Zoning: I

Garbage Day: Friday

Recycle Day: Friday

Brush Route Zone: Zone 2

Brush Route Days

The City of Seguin is divided into 5-zones that allows the Brush Department to provide brush pick up to **residential** customers on a five (5) week rotating schedule. The brush schedule is subject to change due to emergencies, inclement weather, equipment failure or manpower.

Please have Brush set along ROW by 7AM Monday for assigned week.

Below are the next dates for your address:

April 04 2022

April 05 2022

April 06 2022

April 07 2022

April 08 2022

Link To Brush Website

Zoom

3027 N AUSTIN ST

3033

150

3031

3030

3000

3027

N GUADALUPE ST

STREMPER ST

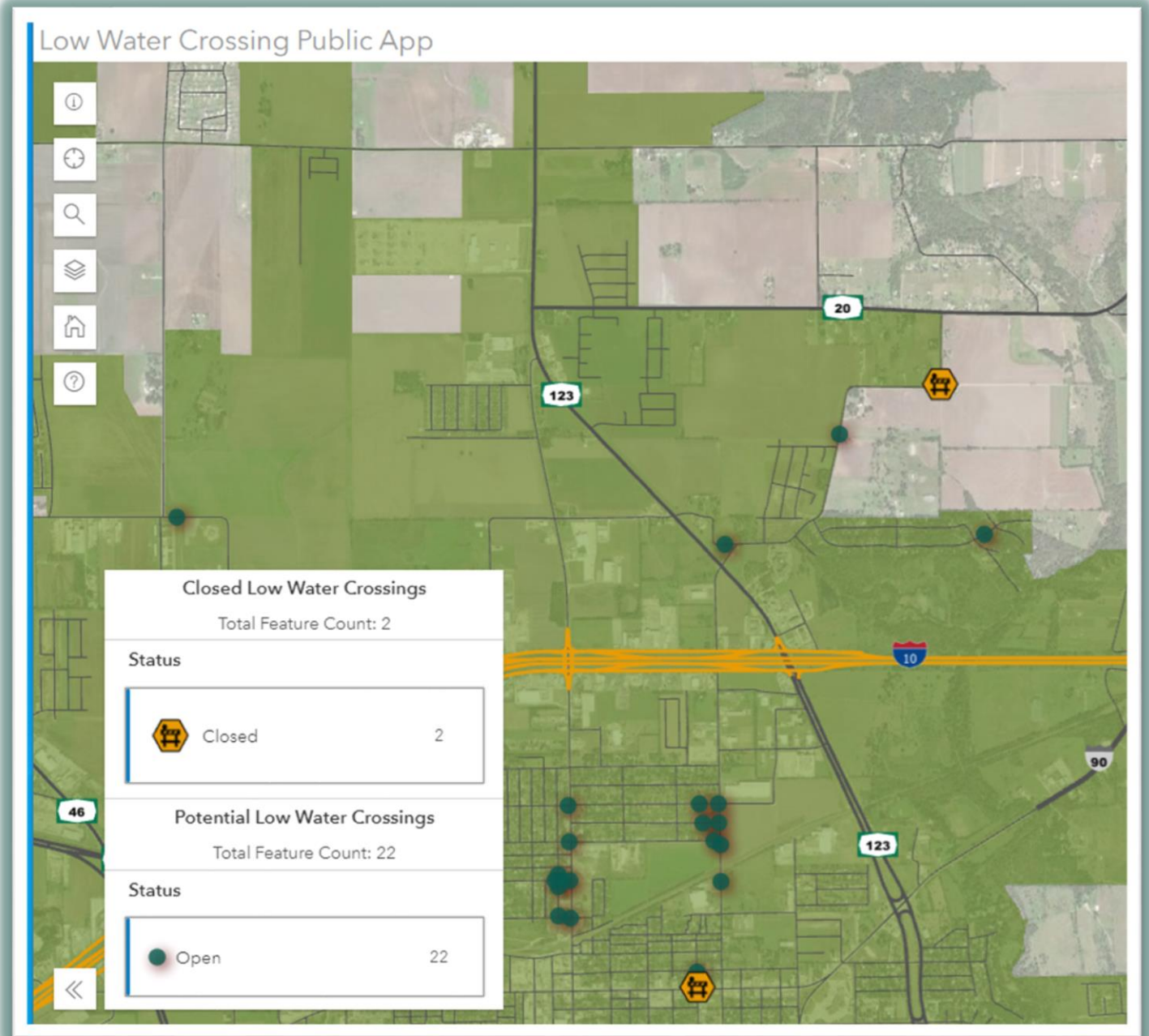
N AUSTIN ST



# Low Water Crossing Application

## Key Features:

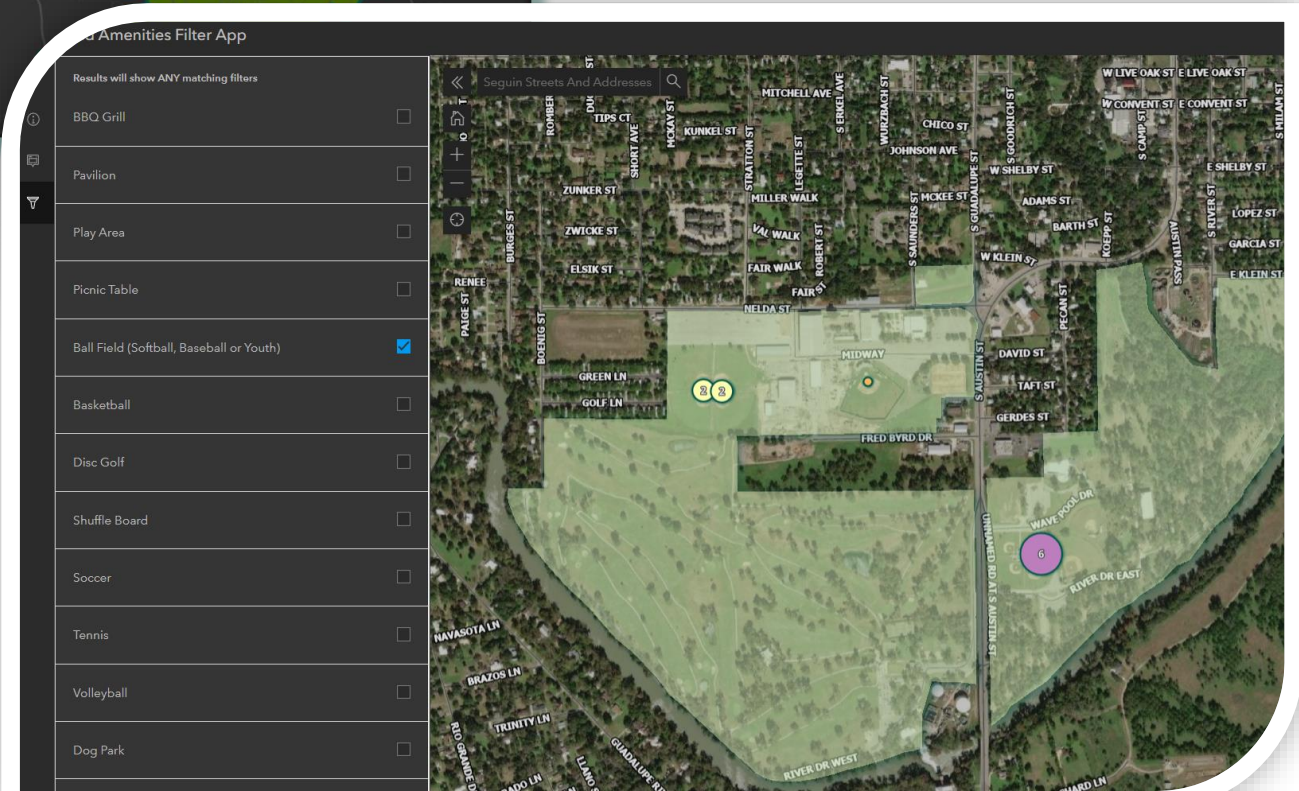
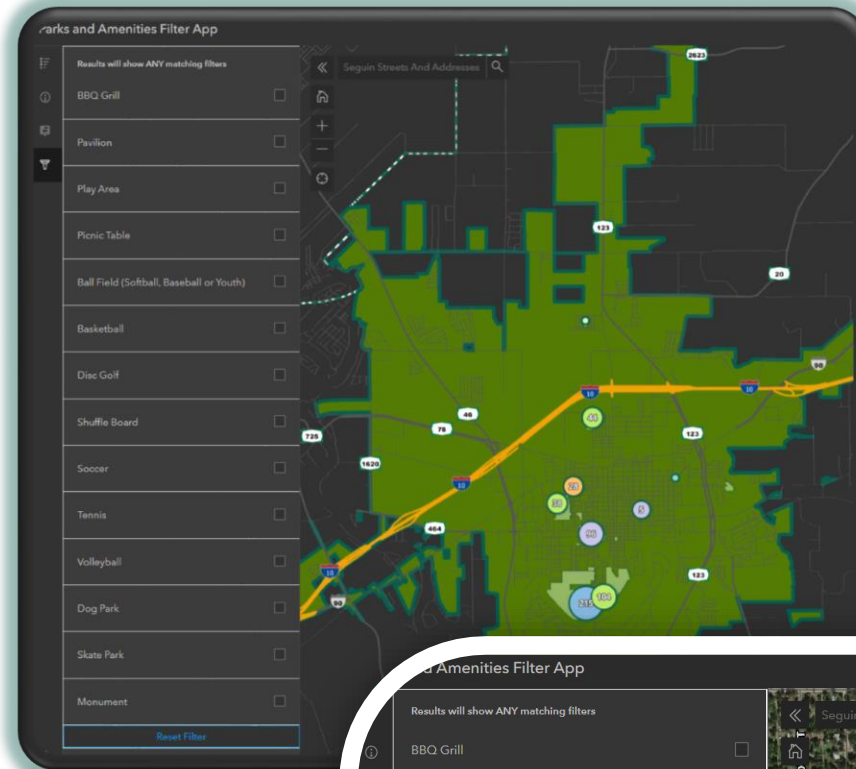
- Overview on Low Water Areas during a rain event
- Closed Roads
- Internal Applications ran by City Staff to Open and Close Roads



# Parks and Amenities Application

## Key Features:

- Filter By Amenity
  - Map on Low Right shows location of Ball Fields in Seguin

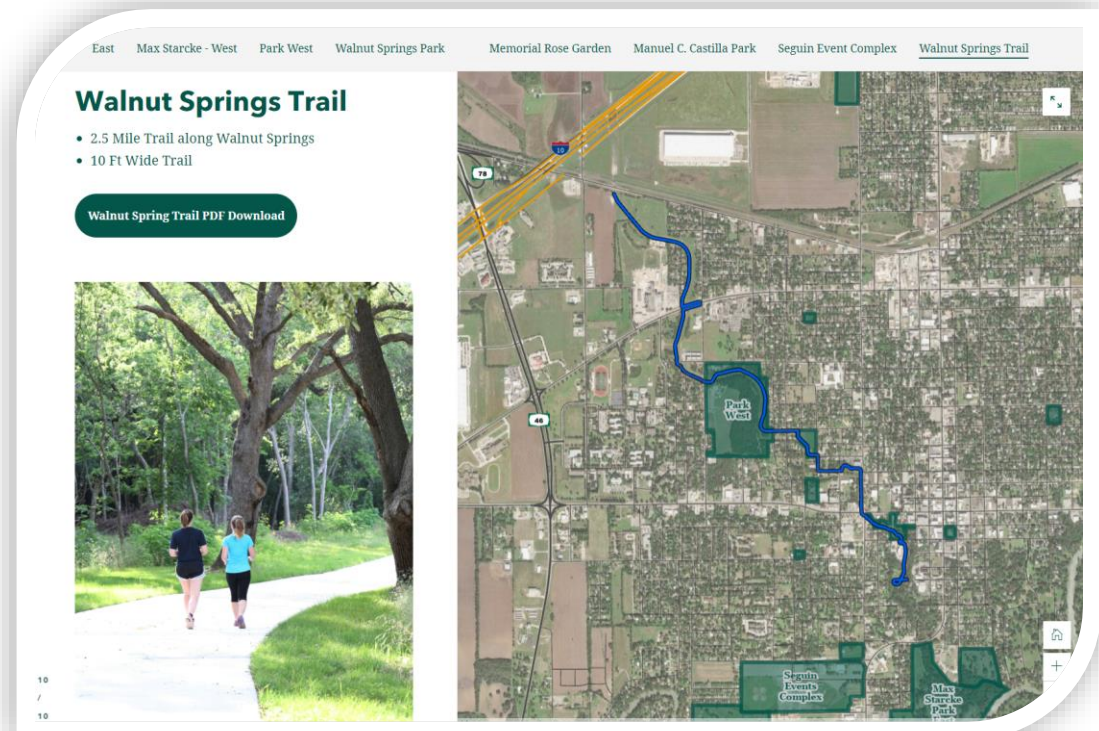
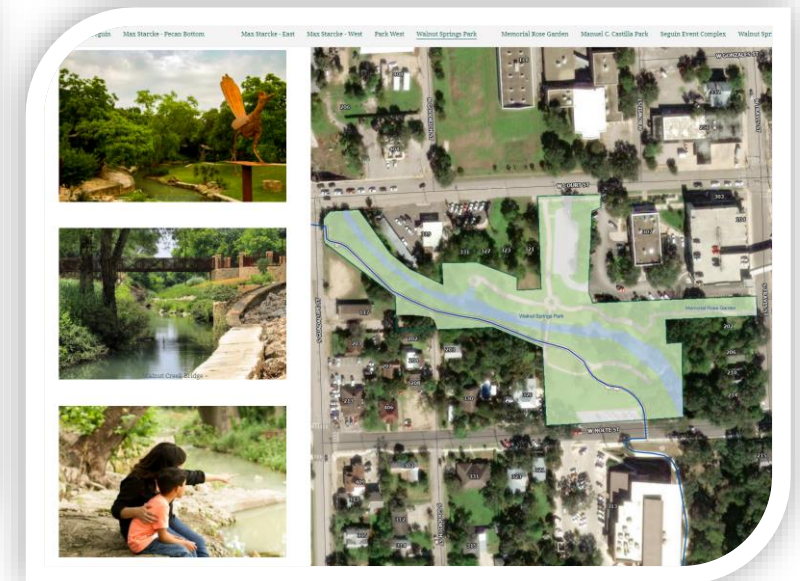
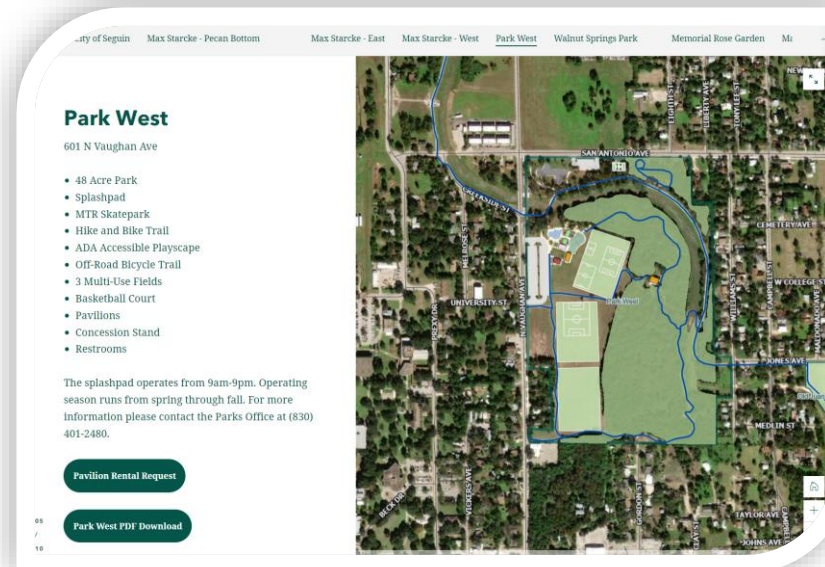




# Parks Storybook

## Key Features:

- This is a storybook applications that allows you to browse through the parks that will highlight key features within the Park
- Pictures
- Link to Reserve Pavilions
- Download PDF Maps



# More to Come!!!

## Departments:

- Planning and Codes
  - Major Throughfare App
  - Proposed Housing Application ✓
  - Zoning Application
  - Internal Applications
- Public Information Office
  - City Services Application ✓
- Fire
  - Drive Time Analyst for Fire Stations ✓
  - Emergency Response Application
- SEDC
  - Storybook Success Stories
  - Current Property Application
  - Infographic Page ✓
- Parks
  - Story Book on Major Parks ✓
  - Parks and Amenities Filter Application ✓
  - GPS Irrigation Valves
- Capital Projects and Engineering
  - City Project Application ✓
  - Floodplain / Flood Awareness Storybook
  - Overall GIS Application with All GIS Layers
  - Road Condition / Walkability Type Application
  - Internal Applications
- Fire Marshall
  - Fire Response Application
  - Low Water Crossing Application ✓
  - Fire Hydrant Data Collection
  - Internal Applications
- Main Street
  - Seguin Downtown Parking Application ✓
  - Parade Route Application and PDFs
  - Historical Marker Storybook / Application
- Public Works
  - Low Water Crossings Application ✓
  - 5 Year Street Improvement Plan
  - Education Based Storybook on Chip Seal / Zipper Road Improvements
  - Internal Applications
- Human Resources
  - New Employee Orientation Storybook on Individual Departments
- Golf
  - Golf Course Storybook
  - GPS Sprinkler System
- Library
  - Storybook on Summer Reading
  - Potential other Storybooks on other programs
- Information Technology
  - Enterprise Agreement with ESRI ✓
  - Best Practice on GIS Server Management ✓
  - GIS Hub (Homepage) ✓



# Seguin, TX GIS

Questions?

## Open Data Seguin, TX

Open Data Seguin is the central location for GIS data, map applications, dashboards, and PDF maps. Anyone can view these maps and download this data at no cost.

### Browse Open Data:



Address Data



Transportation Data



Recreation Data



Boundary Data

### Featured Apps



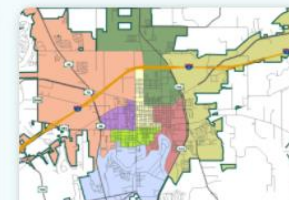
City Projects Dashboard

The City Project Dashboard can be used by the general public and other interested parties t...



Proposed Housing Dashboard

Information on the Subdivision Development throughout the City of Seguin, TX.



City Services App

Application that will provide information on: Council Districts, Garbage Day, Recycl...



City of Seguin - Parks and Recreation

The Parks Department operates the city's recreation and aquatic programs along with...