

Cedar Bluff Apartments

- ▶ **Proposed:** ~202-unit affordable multifamily rental community for adults aged 55+
- ▶ **Developed, Constructed, Managed, & Owned By:** Kittle Property Group, Inc. (KPG)
- ▶ **Location:** 10 acres at 920 San Antonio Avenue in Seguin, TX
- ▶ **Current Property Condition:** Vacant land zoned MF-3
- ▶ **Estimated Rents:** \$864 (1 Bedroom) - \$1,044 (2 Bedroom)
- ▶ Cedar Bluff Apartments will feature one- and two-bedroom units situated within 3 story elevator served interior corridor buildings and 1 story cottages, along with the amenities and services listed below

Community Amenities:

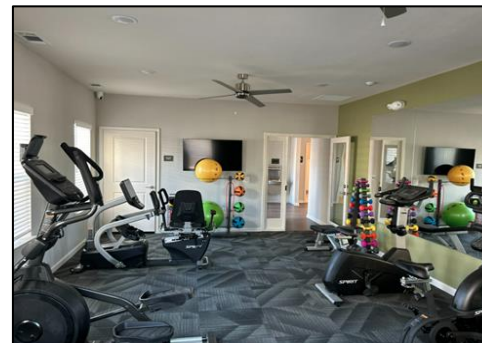
- Onsite management/leasing office
- Community room with kitchen
- Fitness center
- Business center with computers & printers
- Activity/arts & crafts room
- Library
- Dog park
- Controlled access gate

Unit Amenities:

- Covered entries
- Microwaves
- Washer & Dryer
- Patios/balconies
- Walk in closet
- Kitchen island
- Kitchen pantry
- LED lighting, Energy Star appliances/ceiling fans, EPA WaterSense toilets, showerheads, and faucets

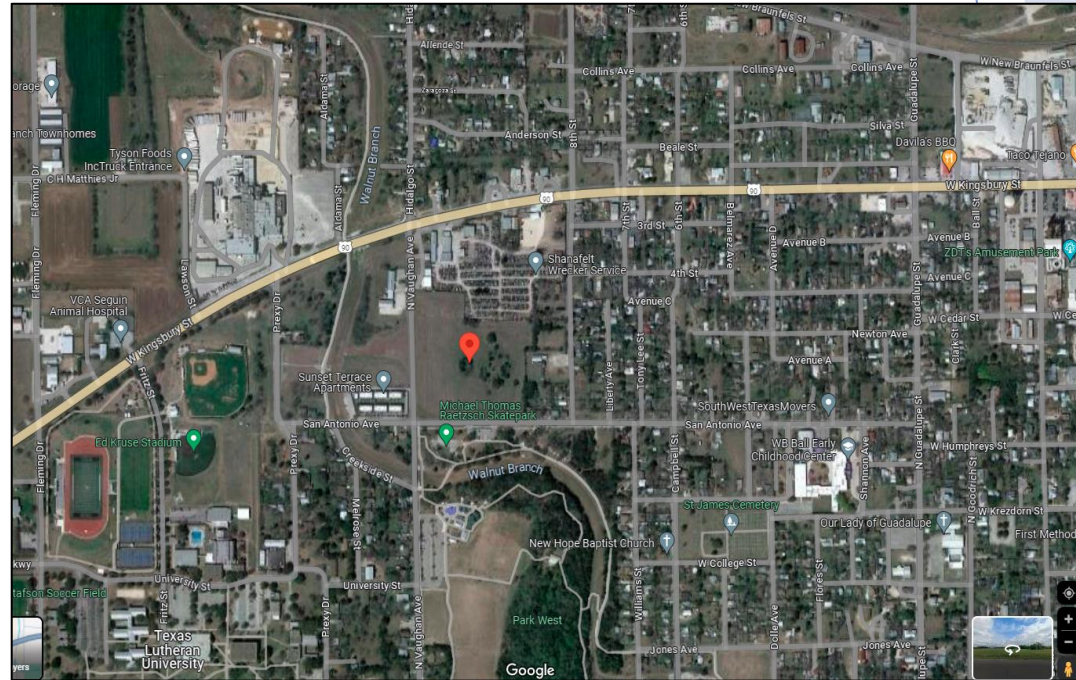
Resident Services:

- Onsite Food Pantry stocked with non-perishable food items and common household items
- Partnership with local law enforcement and/or first responders for onsite social events intended to create relationships with residents
- Annual Health Fair held onsite through partnership with local medical offices/health care professionals
- Annual Income Tax Preparation
- Twice monthly arts, crafts, and recreational activities
- Twice monthly onsite social events



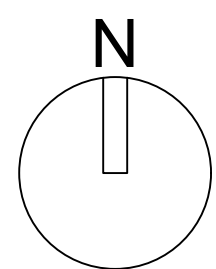
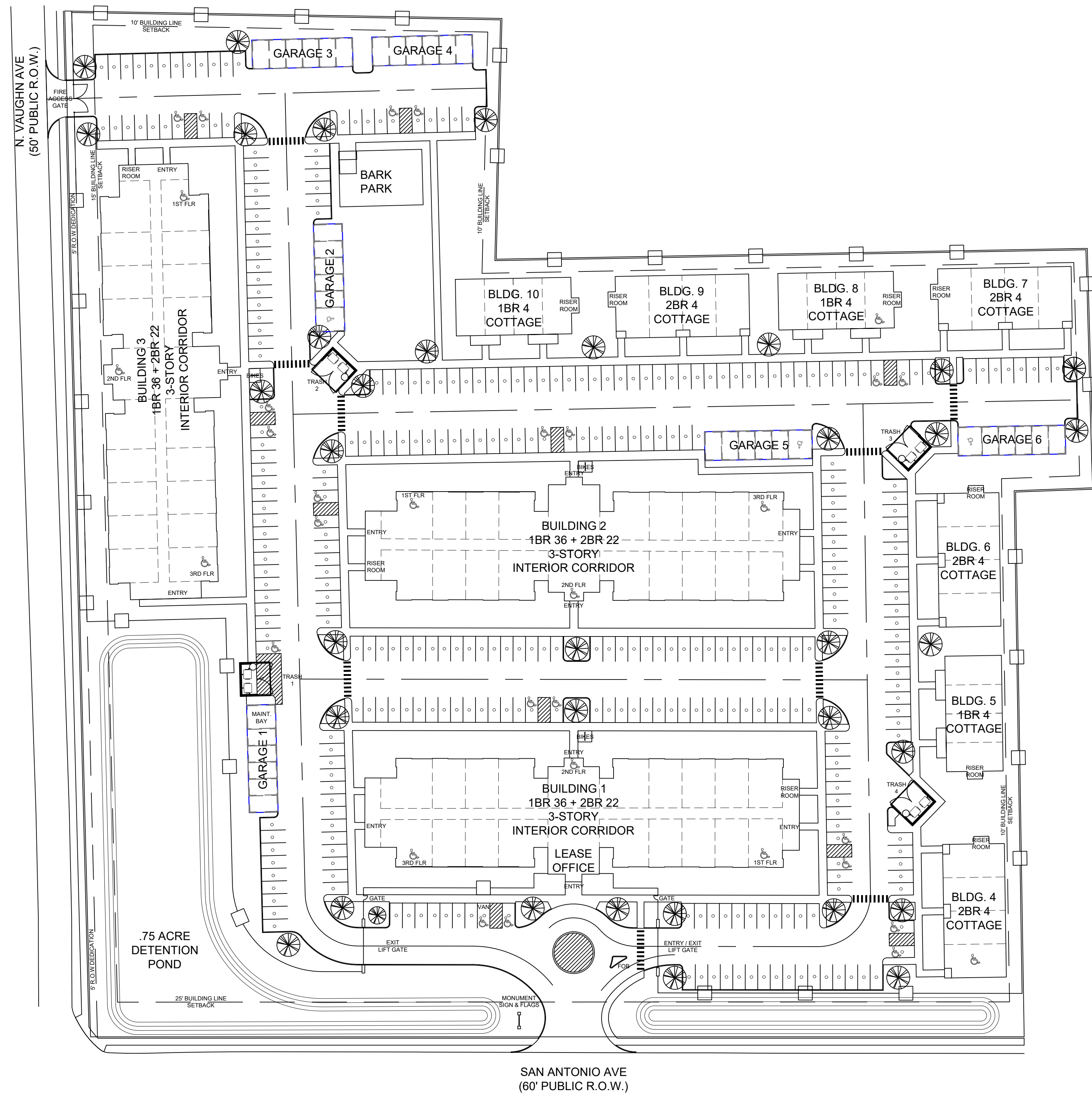
Development Site

- ▶ Approximately 10.19 acres (as outlined in red below)
- ▶ Located at 920 San Antonio Avenue in the City of Seguin
- ▶ Zoned MF-3 which allows for up to 20 units/acre



Photos of Similar Community – Legacy Square, San Marcos, TX (under construction)





PROPOSED SITE PLAN
SCALE: 1"=50'-0"

**CEDAR BLUFF APARTMENTS
SEGUIN, TEXAS**

TOTAL SITE:
10.196 ACRES

SENIOR DEVELOPMENT
10.196 ACRES
202 DWELLING UNITS
~19.8 DU/ACRE

- (3) 1BR36 + 2BR22 INTERIOR CORRIDOR
(4) 2BR4 COTTAGE
(3) 1BR4 COTTAGE

UNIT MIX:
1BR: 120 UNITS
2BR: 82 UNITS
TOTAL: 202 UNITS

ACCESSIBLE UNITS:
202 DUs x 5% = 10.1 = **11** ACCESSIBLE DUs
4 ACC 1BR DUs
7 ACCESSIBLE 2BR DUs

A/V UNITS:
202 DUs x 2% = 4.04 = 5 A/V DUs
2 A/V 1BR DUs
3 A/V 2BR DUs

- AMENITIES:**
LEASING OFFICE (BUILDING 1)
COMMUNITY SPACE (BUILDINGS 1, 2 & 3)
BARK PARK
3 BIKE RACKS (15 BIKES)
MONUMENT SIGN WITH FLAGS
GATED ENTRY
PERIMETER FENCE
 - 6' WOOD PRIVACY SIDE AND REAR YARDS
 - 6' ORNAMENTAL METAL ON FRONTAGE YARD
 - DETENTION POND

REQUIRED PARKING SPACES:
120 1BR UNITS X 1.5 SPACES/UNIT = 180 SPACES
82 2BR UNIT X 2 SPACES/UNIT = 164 SPACES
TOTAL 344 SPACES REQUIRED
17 ACCESSIBLE SPACES REQUIRED

PARKING SPACES PROVIDED:
348 SURFACE PARKING SPACES (21 ACC)
35 (6) GARAGES
1 MAINTENANCE BAY
383 TOTAL PARKING SPACES
(1.9 SPACES/DU)



**KITTLE PROPERTY
GROUP, INC.**
310 East 96th Street, Suite 400
Indianapolis, IN 46240
(317) 846-3111
www.hermankittle.com

COPYRIGHT & OWNERSHIP OF DOCUMENTS
THIS DOCUMENT IS AN INSTRUMENT OF SERVICE AND IS THE
SOLE PROPERTY OF KITTLE PROPERTY GROUP, INC. ALL
INFORMATION CONTAINED HEREIN IS CONFIDENTIAL. ITS
SUBMISSION AND DISTRIBUTION TO OTHER PARTIES IS NOT
TO BE CONSTRUED AS PUBLICATION IN DEROGATION OF
COMMON LAW COPYRIGHT, INTELLECTUAL PROPERTY
RIGHTS OR OTHER RESERVED RIGHTS. ALL INFORMATION
CONTAINED HEREIN CONSTITUTES THE ORIGINAL AND
UNPUBLISHED WORK OF KITTLE PROPERTY GROUP, INC. NO
PART OR WHOLE OF THIS DESIGN, THESE DRAWINGS OR THE
RESULTING BUILDING OR BUILDINGS, OR PORTIONS OF THE
RESULTING BUILDING OR BUILDINGS MAY BE DUPLICATED,
COPIED, EXHIBITED, PHOTOGRAPHED, PUBLISHED, MODIFIED
OR OTHERWISE DISTRIBUTED IN ANY WAY WITHOUT THE
SPECIFIC AND PRIOR WRITTEN CONSENT OF KITTLE
PROPERTY GROUP, INC.
©
SEAL

PROJECT TITLE

**CEDAR BLUFF
APARTMENTS**
920 SAN ANTONIO AVE.
SEGUIN, TEXAS 78155

SHEET TITLE

**PRELIMINARY
ARCHITECTURAL
SITE PLAN**

ISSUED FOR: DATE
KPG INTERNAL REVIEW 04/02/2024

REVISIONS
MARK DESCRIPTION DATE
REVIEW REVISIONS 04/03/2024

DO NOT SCALE PRINTS - USE
FIGURED DIMENSIONS ONLY

JOB NO.

24-001

SHEET NUMBER

ASP1