



NAUMANN RED & WHITE 1956



CHURCH ON TOP OF NEW
STORE AT CHRISTMAS



GRAND OPENING - NAUMANN'S SUPER MARKET



GENE + ELSIE WITH THEIR RED & WHITE
DODGE CAR



VEGETABLE SECTION - NAUMANN'S REAR WHIP



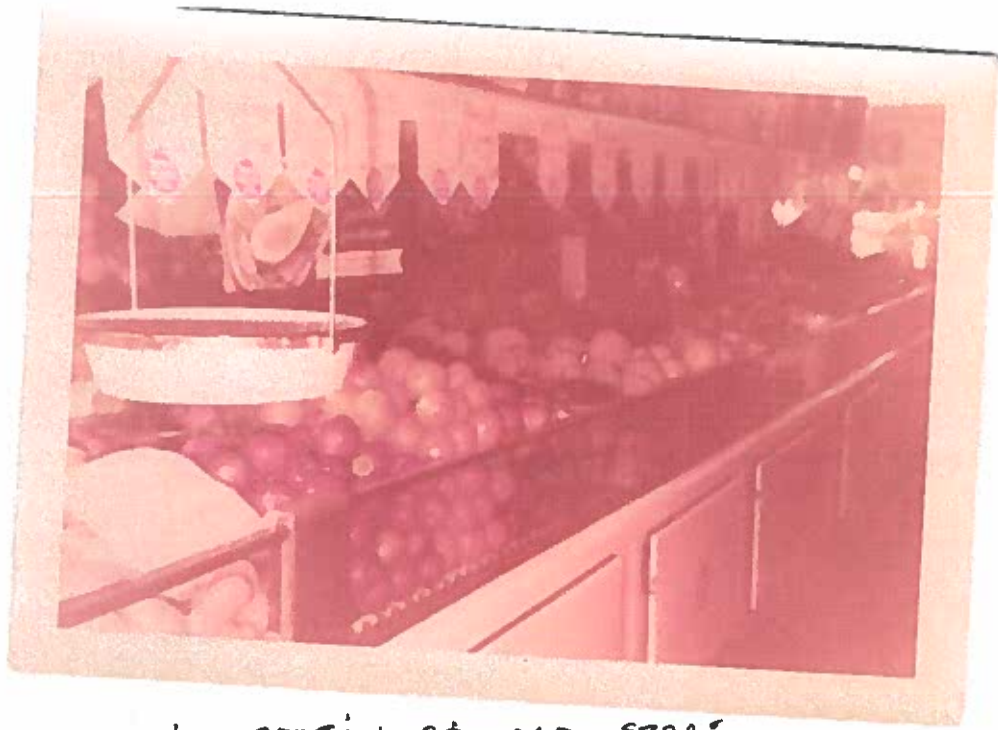
DOROTHY SAGEGIEL & DEBBIE



GRAND OPENING - NAUMANN'S SUPER MKT.
HERB SCHUBERT, WIRNY TADEBER, RUDY TADY



NAUMANN'S SUPER MKT. MEAT SECTION



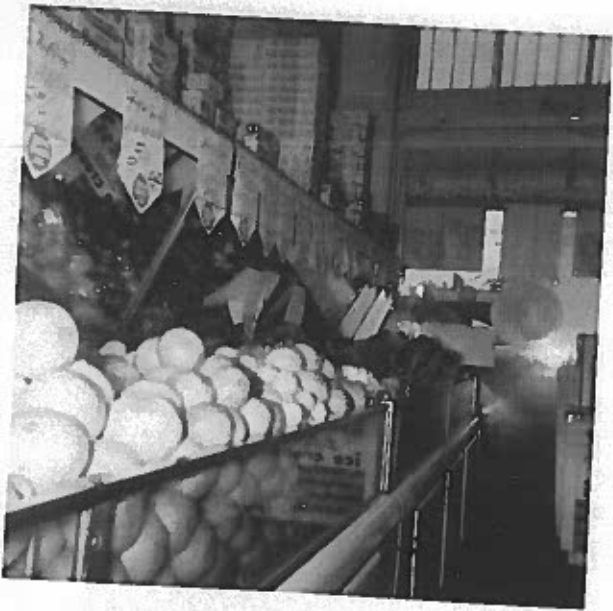
FRUIT SECTION OF OLD STORE
ON GONZALEZ ST. 1956



DAIRY SECTION
NAUMANN'S SUPER MARKET
GRAND OPENING 1958



PEOPLE AT GRAND OPENING
NAUMANN'S SUPER MARKET 1958



PRODUCE SECTION
NAUMANN'S RED + WHITE



PRODUCE SECTION
NAUMANN'S RED + WHITE



CHURCH ON TOP OF NAUMANN'S
RED + WHITE AT CHRISTMAS TIME.
PLAYED CHRISTMAS MUSIC



CARL POOL FLOWER CLINIC
NAUMANN NURSERY 1960



PINK HYDRANGEAS JUNE 6 1955
314 W. KREZDORF



STARLEY 181A
HIGH SCHOOL GRADUATE



BERNHA & LELAND AT BALANCED
ROCK - LAKE TAHOE
SEPT. 1955



CHURCH ON TOP OF STORE AT
CHRISTMAS PLAYING CARDS



NAUMANN NURSERY 410 N. CAMP



STANLEY + GERALD PAPE



NURSERY DISPLAY - GUADALUPE COUNTY FAIR 1964
ELSIE in BOOTH



NAUMANN RED + WHITE
GONZALES ST.