

Memorandum

To: Mayor and City Council Members
Steve Parker, City Manager

From: Melissa Reynolds, P.E., MPA, CFM, City Engineer

Through: Rick Cortes, Deputy City Manager

Subject: Resolution of the City Council of the City of Seguin, Texas authorizing the City Manager to enter into a Professional Service Agreement in the amount of \$141,018.00 with Halff Associates, Inc. for the Walnut Springs Pedestrian Bridge Preliminary Engineering Report; and declaring an effective date.

Date: April 15, 2025

Historical Background

The Walnut Springs Trail follows the course of Walnut Branch for 4.4 miles from the Pecan Bottom trail located near the Guadalupe River in Max Starcke Park East, past the Seguin Public Library, and ending at FM 78 and the UPRR right-of-way. The 2020 Parks, Recreation, Open Space and Trails Master Plan identified potential alignments to proposed master trail routes north of FM 78 and the UPRR right-of-way by way of the Walnut Springs Trail. Currently, the FM 78 and UPRR ROW provides a man-made barrier which discourages connectivity to existing and proposed facilities. Given the proximity of the Walnut Branch Creek floodplain, intensive traffic along FM 78, and railroad safety concerns, innovative ideas for crossings require a preliminary engineering report.

Five (5) statements of qualifications for Professional Services for the Walnut Springs Pedestrian Bridge Preliminary Engineering Report were received on February 25, 2025. Based on scoring criteria provided in the request for qualifications, award of this project to Halff Associates, Inc. is proposed based on the recommendation by the review panel following the rating process.

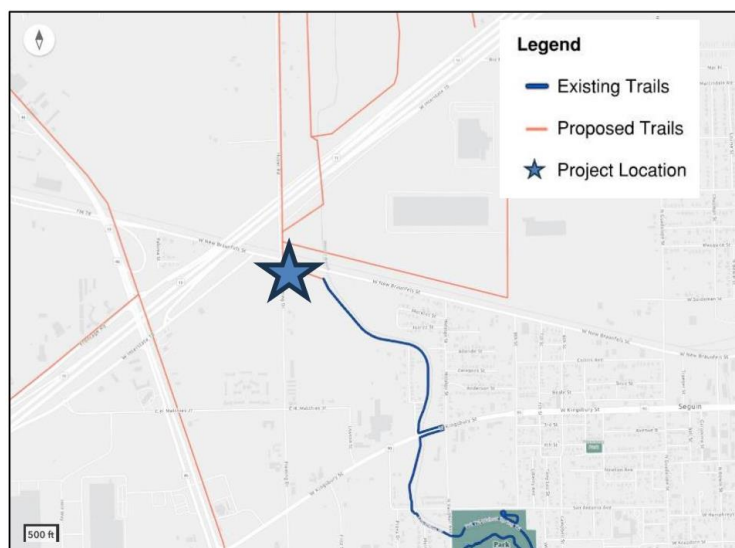


Figure 1: Project Location

It's real.

Action Requested

The goal of this Professional Services Agreement is to provide a preliminary engineering report for the Walnut Springs Pedestrian Bridge. The engineering firm selected will provide professional services relating to the evaluation and innovative alternatives for bridge design and alignment for a new pedestrian and bicycle bridge crossing FM 78 and the Union Pacific Railroad linking the existing Walnut Springs Trail to residents on the north side of IH-10.

Procurement Methodology & Funding Source

Funding for professional services has been identified from the FY25 Capital Improvement general fund. The associated Request for Qualifications issued for this project is AF-2025-36.

Staff Recommendation

Staff recommends the professional services agreement be executed with Half Associates, Inc. in the amount of \$141,018.00.

ATTACHMENTS

1. 2025.04.15 Resolution Ped Bridge PER PSA
2. Professional Services Agreement