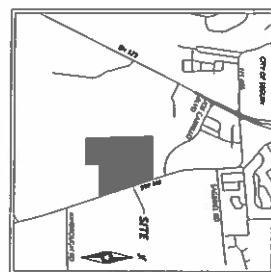


## LEGEND



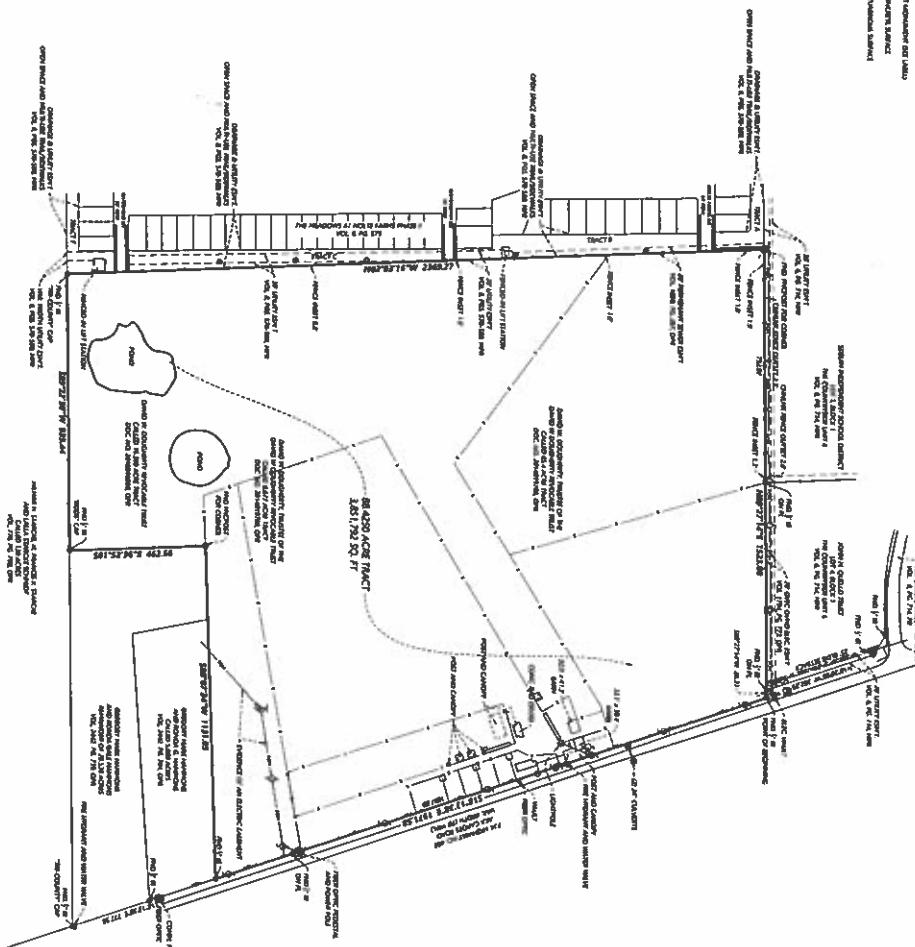
## GENERAL NOTES

- [illegible]

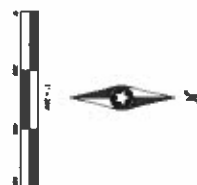
**EXCEPTIONS (PER GF No. 524-48-4300112105336-RJ)**

[illegible]

## CERTIFICATION

[illegible]

## FIELD NOTE DESCRIPTION

[illegible]

Product No. 37763  
Cof Corp. Inc.

DATE ORDERED \_\_\_\_\_  
 BILL CODE \_\_\_\_\_  
 BILL WORK DATE \_\_\_\_\_

## CONCLUSIONS

19, 2003

PREPARED FOR

LGI Homes - Texas, LLC  
8601 RR 2222, Bldg. 1, Ste. 150  
Austin, Texas 78730

Exhibit 10

**TSPS CATEGORY 1A  
CONDITION III LAND  
TITLE SURVEY**

AN 88.4250 ACRE TRACT OUT OF THE JOHN

SONELL SURVEY NO. 16, ABSTRACT  
GUADALUPE COUNTY, TEXAS

Westwood

**Phone** 212 512-6000      **174 Bay Street, Suite 100**  
**Address** (800) 827-2400      **San Antonio, TX 78205**  
**Website:** [www.mg.com](http://www.mg.com)

**SOCIETY NUMBER**

1  
2  
1

DATE: 10/14/2023